



PRICE LIST 2025

ENOITALIA



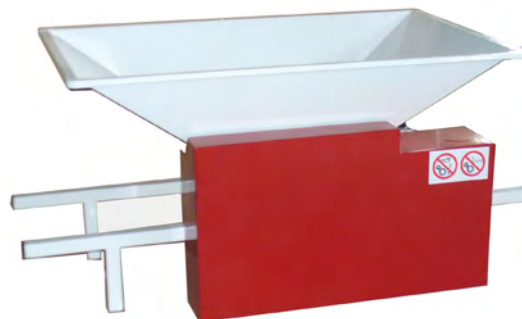
**EASY LINE
GRAPE PROCESSING**



CRUSHER MICROENO, MINIENO, ENO 1 e ENO 2



ENO 1, ENO 2 - Stainless steel hopper, with engine



ENO 1, ENO 2 - smalted with engine



MICROENO, MINIENO, ENO 1, ENO 2 - inox hopper with flywheel



Safety protection

MODEL		
Cod.	Description	€
494	MICROENO - smalted hopper	
491	MINIENO - smalted hopper and agitator	
492	MINIENO - hopper and agitator Inox	
501	ENO 1 - smalted hopper and agitator	
502	ENO 1 - hopper and agitator Inox	
503	ENO 1 - with ENGINE, smalted hopper and agitator	
504	ENO 1 - with ENGINE, hopper and agitator Inox	
511	ENO 2 - smalted hopper and agitator	
512	ENO 2 - hopper and agitator Inox	
513	ENO 2 - with ENGINE, smalted hopper and agitator	
514	ENO 2 - with ENGINE, hopper and agitator Inox	

STANDARD FEATURES
<ul style="list-style-type: none"> • Autoadjustable food aluminium rollers • CE motor with emergency stop • Cartoon box packaging • Steel protective casing

OPTIONAL		
Cod.	Description	€
006	Safety protection (required to issue a conformity declaration)	

MODEL	ENGINE HP (Kw)	HOURLY PRODUCTION	HOPPER	DIMENSION mm		WEIGHT		ROLLER LENGHT
				with flywheel	with engine	with flywheel	with engine	
MICROENO	---	200 - 450 Kg/h	555x455 mm	860x365x470	---	14 Kg	---	150 mm
MINIENO	---	300 - 500 Kg/h	650x470 mm	1000x390x490	---	18 Kg	---	220 mm
ENO 1	1 (0,75)	500 - 700 Kg/h	850x560 mm	1210x580x350	1210x500x570	22 Kg	33 Kg	220 mm
ENO 2	1 (0,75)	600 - 800 Kg/h	1000x630 mm	1210x620x400	1210x550x620	29 Kg	40 Kg	280 mm

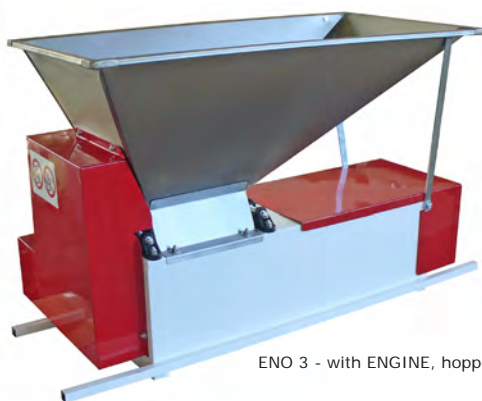


CRUSHER DESTEMMER ENO 3

ENO 3 INOX - with ENGINE, hopper and agitator Inox



ENO 3 - with flywheel smalted hopper and agitator



ENO 3 - with ENGINE, hopper Inox



Safety protection

STANDARD FEATURES

- Autoadjustable food aluminium rollers
- CE motor with emergency stop
- Stainless steel basket
- Cartoon box packaging
- Steel protective casing

MODEL		
Cod.	Description	€
521	ENO 3 - smalted hopper and agitator	
522	ENO 3 - hopper and agitator Inox	
525	ENO 3 INOX - hopper and agitator Inox	
523	ENO 3 - with ENGINE, smalted hopper and agitator	
524	ENO 3 - with ENGINE, hopper and agitator Inox	
526	ENO 3 INOX - with ENGINE, hopper and agitator Inox	

OPTIONAL		
Cod.	Description	€
009	Inox stand with slide	
530	Kit for transforming a flywheel into an engine.	
006	Safety protection (required to issue a conformity declaration)	



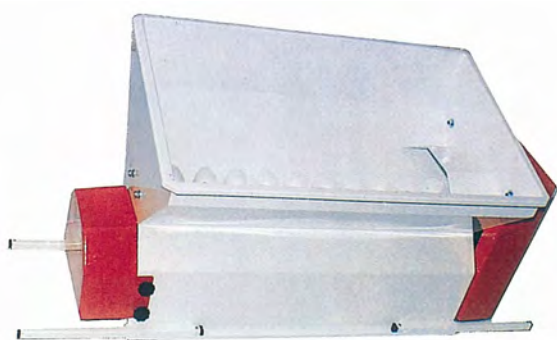
MODEL	ENGINE HP (Kw)	HOURLY PRODUCTION	HOPPER	DIMENSION mm		WEIGHT		ROLLER LENGHT
				with flywheel	with engine	with flywheel	with engine	
ENO 3	1 (0,75)	1000 - 1200 Kg/h	850x500 mm	1210x550x690	1210x600x690	40 Kg	51 Kg	220 mm
STAND	---	---	---	1100x500x250	1210x500x620	8 Kg	---	---



DESTEMMER ENO 10



ENO 10 - with engine, inox



ENO 10 - with engine, smalted



Inox stand with slide




Safety protection

STANDARD FEATURES

- CE motor with emergency stop
- Carton box packaging
- Steel safety protection
- steel protective casing

MODEL		
Cod.	Description	€
012	ENO 10 - with ENGINE, smalted	
212	ENO 10 INOX - with ENGINE, Inox	

OPTIONAL		
Cod.	Description	€
009	Inox stand with slide	
006	Safety protection (required to issue a conformity declaration) 	

MODEL	ENGINE HP (Kw)	HOURLY PRODUCTION	SPEED	DIMENSION	WEIGHT
ENO 10	1 (0,75)	1000 - 1200 Kg/h	500 RPM	1210x600x690 mm	50 Kg
STAND	---	---	---	1100x550x620 mm	8 Kg



CRUSHER DESTEMMER ENO 15



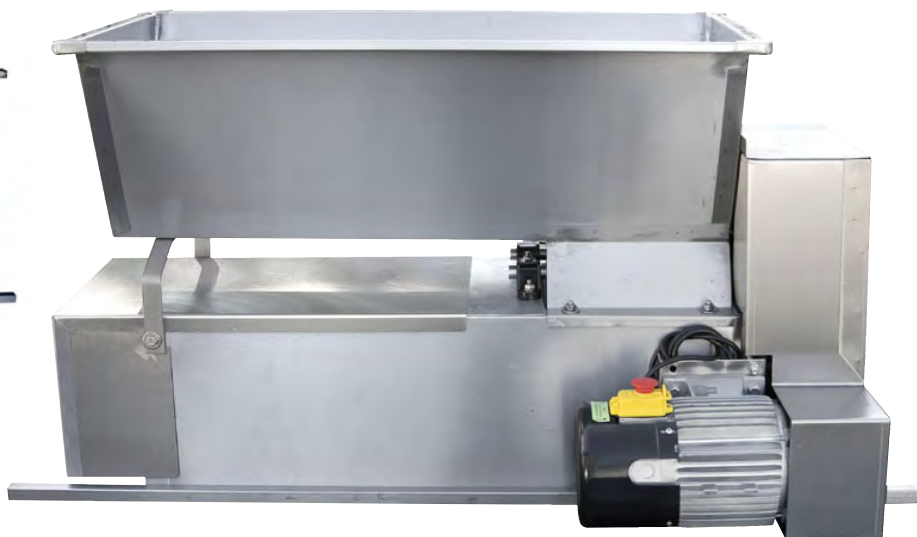
Video

Cod. 027 - 028

ENO 15 INOX - With engine



Safety protection



ENO 15 - with engine, smalted

MODEL		
Cod.	Description	€
025	ENO 15 - Aluminium roller, smalted hopper	
024	ENO 15 - Rubber roller, smalted hopper	
027	ENO 15 - Aluminium roller, Inox hopper	
028	ENO 15 - Rubber roller, Inox hopper	
225	ENO 15 INOX - Aluminium roller	
224	ENO 15 INOX - Rubber roller	

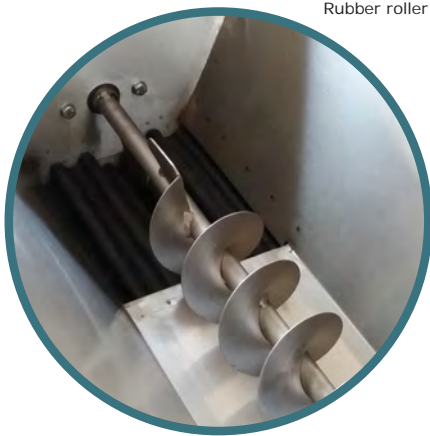
OPTIONAL		
Cod.	Description	€
009	Inox stand with slide	
006	Safety protection (required to issue a conformity declaration)	

STANDARD FEATURES
<ul style="list-style-type: none"> Adjustable aluminium roller for alimentary use HP 1 engine with CE emergency stop Stainless steel basket Cartoon box packing Steel protective casing

MODEL	ENGINE HP (Kw)	HOURLY PRODUCTION	SPEED	DIMENSION HOPPER	DIMENSION	WEIGHT
ENO 15	1 (0,75)	1600 - 1800 Kg/h	500 RPM	850x480	1210x600x630 mm	54 Kg
STAND	---	---	---	---	1100x550x620 mm	8 Kg



CRUSHER DESTEMMER SEMICENTRIFUGAL ENO 20



Rubber roller



ENO 20 INOX - with engine, Inox




ENO 20 - with engine, salted hopper



Safety protection

MODEL		
Cod.	Description	€
482	ENO 20 - Aluminium roller, salted	
483	ENO 20 - Rubber roller, salted	
485	ENO 20 INOX - Aluminium roller	
486	ENO 20 INOX - Rubber roller	

OPTIONAL		
Cod.	Description	€
006	Safety guard with internal pyramid grid 	

STANDARD FEATURES

- CE motor with emergency stop
- Stainless steel basket
- Stainless steel centrifuge pump
- Stretch wrap packaging
- Steel protective casing

MODEL	ENGINE HP (Kw)	HOURLY PRODUCTION	SPEED	PUMP	PUMP HEADS	DIMENSION	WEIGHT
ENO 20	2 (1,5)	1500 - 1800 Kg/h	500 RPM	60 Ø	15 Oriz. - 5 Vert.	1120x600x960 mm	70 Kg



DESTEMMER CRUSHER SEMICENTRIFUGE ARNO 15, 25, 35



ARNO INOX - with engine



ARNO - with engine, smaltered



Safety protection




Opening system

MODEL		
Cod.	Description	€
033	ARNO 15 - smaltered	
233	ARNO 15 INOX	
042	ARNO 25 - smaltered	
242	ARNO 25 INOX	
052	ARNO 35 - smaltered	
252	ARNO 35 INOX	

STANDARD FEATURES

- CE motor with emergency stop
- Stainless steel basket
- Stainless steel centrifuge pump
- Stretch wrap packaging
- Steel protective casing

OPTIONAL

Cod.	Description	€
006	Safety guard with internal pyramid grid 	

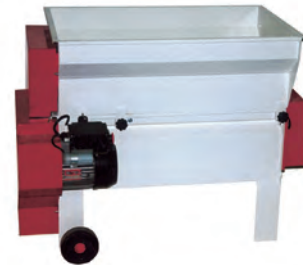
MODEL	ENGINE HP (Kw)	HOURLY PRODUCTION	SPEED	PUMP	PUMP HEADS	DIMENSION	WEIGHT
ARNO 15	2 (1,5)	2000 Kg/h	500 RPM	60/50 Ø	15 Oriz. - 5 Vert.	1100x700x900 mm	78 Kg
ARNO 25	2,5 (1,8)	3000 Kg/h	500 RPM	60 Ø	15 Oriz. - 5 Vert.	1200x700x900 mm	86 Kg
ARNO 35	2,5 (1,8)	3800 Kg/h	500 RPM	60 Ø	15 Oriz. - 5 Vert.	1300x700x900 mm	100 Kg



DESTEMMER CRUSHER SEMICENTRIFUGE JOLLY 15/E, 25/E, 35/E



JOLLY Inox - with engine



JOLLY - with engine, smalted



Safety protection



Opening system

STANDARD FEATURES

- CE motor with emergency stop
- Stainless steel basket
- Stainless steel centrifuge pump
- Stretch wrap packaging
- steel protective casing

MODEL

Cod.	Description	€
063	JOLLY 15/E - smalted	
263	JOLLY 15/E INOX	
082	JOLLY 25/E - smalted	
282	JOLLY 25/E INOX	
092	JOLLY 35/E - smalted	
292	JOLLY 35/E INOX	

OPTIONAL

Cod.	Description	€
006	Safety guard with internal pyramid grid	



MODEL	ENGINE HP (Kw)	HOURLY PRODUCTION	SPEED	PUMP	PUMP HEADS	DIMENSION	WEIGHT
JOLLY 15/E	2 (1,5)	2000 Kg/h	500 RPM	60/50 Ø	15 Oriz. - 5 Vert.	1130x680x900 mm	80 Kg
JOLLY 25/E	2,5 (1,8)	3000 Kg/h	500 RPM	60 Ø	15 Oriz. - 5 Vert.	1230x680x900 mm	94 Kg
JOLLY 35/E	2,5 (1,8)	3800 Kg/h	500 RPM	60 Ø	15 Oriz. - 5 Vert.	1330x680x900 mm	110 Kg



**PROFESSIONAL LINE
GRAPE PROCESSING**



DESTEMMER CRUSHER SEMICENTRIFUGE JOLLY AR



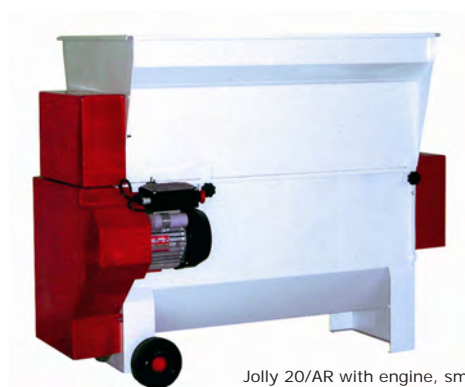
Video



Jolly AR INOX with engine



Opening system



Jolly 20/AR with engine, smalted

STANDARD FEATURES

- Autoadjustable rubber food rollers
- Destemmer shaft with rubber tips
- CE motor with emergency stop
- Stainless steel basket
- Stainless steel centrifuge pump
- Stretch wrap packaging
- Steel protective casing

MODEL		
Cod.	Description	€
102	JOLLY 20/AR - smalted with safety protection	
302	JOLLY 20/AR INOX - with safety protection	
312	JOLLY 30/AR INOX - with safety protection	

OPTIONAL		
Cod.	Description	€
006	Safety guard with internal piramid grid, in addition to the standard	
007	Difference for stainless steel screw with food-grade rubber coating (only for codes 302 and 312)	

MODEL	ENGINE HP (Kw)	HOURLY PRODUCTION	SPEED	PUMP	PUMP HEADS	DIMENSION	WEIGHT
JOLLY 20/AR	2 (1,5)	2000-2300 Kg/h	500 RPM	60 Ø	15 Oriz. - 5 Vert.	1180x680x900 mm	112 Kg
JOLLY 30/AR	2,5 (1,8)	3000-3300 Kg/h	500 RPM	60 Ø	15 Oriz. - 5 Vert.	1280x680x900 mm	128 Kg



DESTEMMER CRUSHER CENTRIFUGE JOLLY 50/A



JOLLY 50/A - INOX with engine



Opening system



JOLLY 50/A- with engine, smalted

STANDARD FEATURES

- Stainless steel centrifugal basket
- Destemmer shaft with rubber blades
- CE motor with emergency stop
- Stainless steel centrifuge pump
- Stretch wrap packaging
- steel protective casing

MODEL		
Cod.	Description	€
122	JOLLY 50/A - smalted, complete with safety protection	
322	JOLLY 50/A INOX complete with safety protection	

OPTIONAL		
Cod.	Description	€
006	Safety guard with internal piramid grid (in addition to the standard supplied)	
007	Difference for stainless steel screw with food-grade rubber coating	

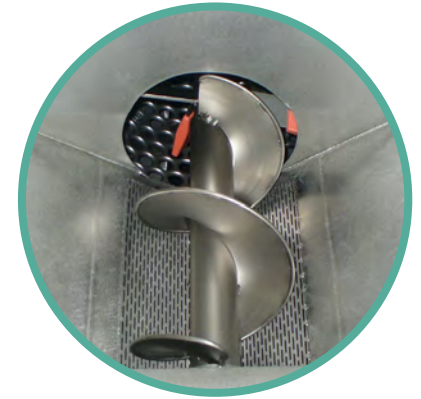
MODEL	ENGINE HP (Kw)	HOURLY PRODUCTION	SPEED	PUMP	PUMP HEADS	Ø BASKET	DIMENSION	WEIGHT
JOLLY 50/A	3 (2,2)	4500-5500 Kg/h	500 RPM	60 Ø	18 Oriz. - 5 Vert.	300 mm	1500x800x970 mm	130 Kg



DESTEMMER CRUSHER CENTRIFUGE BETA



Beta INOX with engine special voltage



HOPPER Beta with filter



Opening system



STANDARD FEATURES

- Stainless steel centrifugal basket
- Destemmer shaft with rubber tips
- CE motor with emergency stop
- Stainless steel centrifuge pump
- Stretch wrap packaging
- Steel protective casing

MODEL

Cod.	Description	€
332	BETA 60 INOX with safety protection	
342	BETA 90 INOX with safety protection	
352	BETA 120 INOX with safety protection	

OPTIONAL

Cod.	Description	€
006	Safety guard with internal pyramid grid (in addition to the standard supplied)	
353	Inox flange with conical fitting 80-60 garolla type instead of centrifuge pump	

MODEL	ENGINE HP (Kw)	HOURLY PRODUCTION	SPEED	PUMP	PUMP HEADS	Ø BASKET	DIMENSION	WEIGHT
BETA 60	3 (2,2)	5000-6000 Kg/h	500 RPM	60 Ø	18 Oriz. - 5 Vert.	300 mm	1650x1050x1100 mm	160 Kg
BETA 90	4 (3)	8000-10000 Kg/h	500 RPM	60 Ø	20 Oriz. - 6 Vert.	400 mm	1950x1100x1100 mm	200 Kg
BETA 120	5,5 (4)	10000-12000 Kg/h	500 RPM	60 Ø	20 Oriz. - 6 Vert.	500 mm	2000x1100x1180 mm	230 Kg



DESTEMMER CRUSHER SEMICENTRIFUGE JOLLY 40 MV



Cod. 390 + Cod. 004



Cod. 396 + Cod. 001



Roller conveyor and collection tank

STANDARD FEATURES

- Professional basket no-laceration semicentrifuge type
- Adjustable and removable rubber rollers
- Engine 1,8 KW with emergency stop CE
- Collection tank with central screw, completely removable, double connection DN80
- Destemmer shaft with rubber tips
- N°4 wheels Ø 100 mm
- Safety protection CE

MODEL

Cod.	Description	€
390	JOLLY 40 MV - with crushing unit and collection tank with safety protection included	
396	JOLLY 40 MV - with crushing unit, without collection tank, with higher inox wheels. With safety protection.	

OPTIONAL

Cod.	Description	€
001	Manual speed variator	
004/40	Electronic speed variator	
007	Difference for inox loading screw with rubber profile	
019/40	Additional basket with different hole	

MODEL	ENGINE HP (Kw)	HOURLY PRODUCTION	SHAFT SPEED	ATTACCO PUMP	DIMENSION mm	WEIGHT
JOLLY 40MV	2,5 (1,8) MF 2,5 (1,8) TF	2000-4000 Kg/h	400-600 RPM	80-60 Ø	1390x800x1320 (1370)	160 Kg



DESTEMMER CRUSHER CENTRIFUGE JOLLY 40 REVERSE



Control panel



Cod. 014 collection tank



STANDARD FEATURES

- Centrifuge professional basket, no laceration type 24 mm perforation
- Adjustable and removable rubber rollers
- Destemmer shaft with rubber tips
- Electronic speed variator 1,1 KW for destemming unit
- Motor gear reducer 0,75kw for crushing unit
- Central opening
- N.4 wheels
- CE Safety protection

MODEL

Cod.	Description	€
388	JOLLY 40 Reverse, with crushing unit, electronic variator, safety protection	

OPTIONAL

Cod.	Description	€
014	Collection tank with central screw, double connection DN80, cardan shaft	
019/60	Additional basket with different hole	
3881	Difference for single-phase motorization (panel separate from the machine body)	

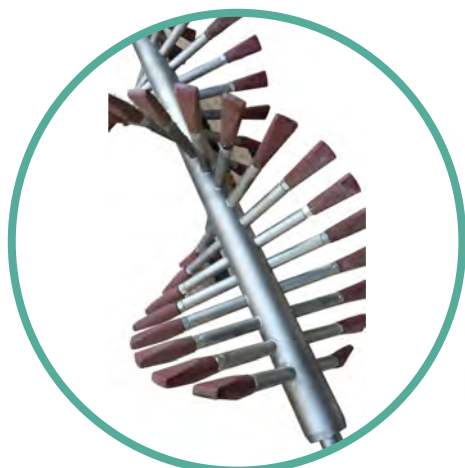
MODEL	ENGINE HP (Kw)	HOURLY PRODUCTION	SHAFT SPEED	Ø BASKET	DIMENSION mm	WEIGHT
JOLLY 40	2,5 (1,8) MF/TF	2000-4000 Kg/h	450-600 RPM	250	1800x880x1350	180 Kg



DESTEMMER CRUSHER INOX JOLLY 60 MV



Video



Cod. 003



Opening system

STANDARD FEATURES

- Centrifuge professional basket, no laceration type
- Adjustable and removable rubber roller
- Rubber profile screw welded on the basket
- Electronic speed variator 2,2 Kw
- Destemmer shaft with rubber tips
- Central opening for removing shaft and basket
- Removable control panel with emergency stop
- N°4 wheels Ø 150 mm
- Safety protection CE

MODEL		
Cod.	Description	€
391	JOLLY 60 MV - with electronic speed variator, safety protection and crusher unit	
OPTIONAL		
Cod.	Description	€
014-60	Collection tank with central screw, double connection DN80, cardan shaft	
003-60	Destemmer shaft with adjustable cylinder	
016-60	Larger hopper for macrobin use	
007	Inox loading screw with rubber profile	
019-60	Additional basket with different hole	
095	Difference for centrifugal net in polyethylene	

MODEL	ENGINE HP (Kw)	HOURLY PRODUCTION	SHAFT SPEED	Ø BASKET	FITTING PUMP	DIMENSION mm	WEIGHT
JOLLY 60 MV	2,25 (1,6) MF/TF	4000-6000 Kg/h	400-600 RPM	300 mm	60-80	1600x840x1370	180 Kg



DESTEMMER CRUSHER INOX JOLLY 60 MV with integrated sorting line



Video



STANDARD FEATURES

- Centrifuge professional basket, no laceration type
- Adjustable and removable rubber rollers
- Rubber profile screw welded on the basket
- Mechanical speed variator 0,5 KW for sorting table
- Electronic speed variator 2,2 KW for destemmer
- Destemmer shaft with rubber plate
- No loading screw
- Removable control panel with emergency stop

MODEL

Cod.	Description	€
391+008	JOLLY 60 MV - with integrated sorting table, crushing unit, speed variator	

OPTIONAL

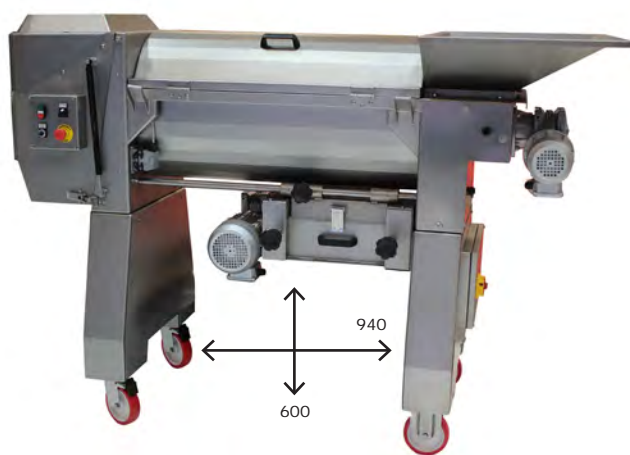
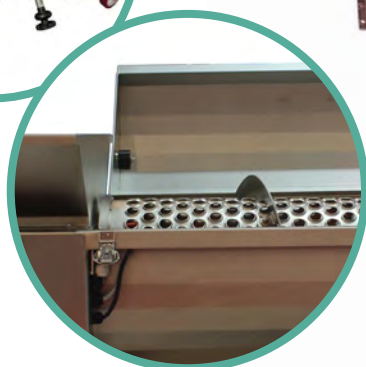
Cod.	Description	€
014-60	Collection tray with central screw, cardan transmission. Double pump fitting DN 80	
003-60	Difference for destemmer shaft with adjustable cylindrical	
095	Difference for centrifugal net in polyethylene	

MODEL	ENGINE HP (Kw)	HOURLY PRODUCTION	SPEED	PUMP	LOADING HOPPER	Ø BASKET	DIMENSION	WEIGHT
JOLLY 60 MV	4 (3) TF	4000-6000 Kg/h	400-600 RPM	60-80 Ø	825X650 mm	300 mm	4230x840x1470 mm	300 Kg



DESTEMMER CRUSHER JOLLY 60 RS

Rubber roller



STANDARD FEATURES

- Centrifugal basket in stainless steel, no laceration type
- Adjustable and removable rubber roller, with engine 1,5 Kw
- Loading hopper with dosing motor reducer 0,37 Kw
- Electronic speed variator for destemming unit 1,5 Kw
- Backside opening to remove shaft and basket
- Back cover in stainless steel
- Inox panel control
- Safety protection CE

MODEL

Cod.	Descrizione	€
399	JOLLY 60 RS - with speed variator and crushing unit	

OPTIONAL

Cod.	Descrizione	€
0141	Collection buffer with central screw and engine	
095	Difference for centrifugal basket in polyethilene	

MODEL	ENGINE HP (Kw)	POWER	HOURLY PRODUCTION	SPEED	Ø BASKET	DIMENSION	WEIGHT
399	3,2 Kw	TF 380V-50Hz	4000-7000 Kg/h	350-650 RPM	300 mm	2010x830x1340 mm	180 Kg
		TF 220V-60Hz					

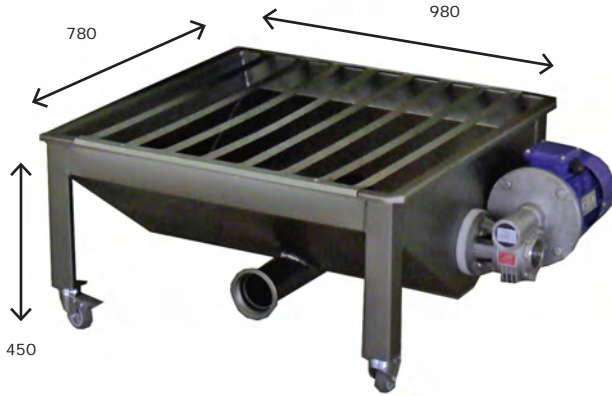


DESTEMMER CRUSHER JOLLY 100 MV



Cod. 392 + 004

Cod. 003



Cod. 0141

MODEL		
Cod.	Description	€
392	JOLLY 100 MV - with gear speed variator and crushing unit	

OPTIONAL		
Cod.	Description	€
0141	Collection hopper with central screw, engine HP 1. Double pump fitting DN 80	
004/100	Difference for electronic speed variator	
003-100	Difference for destemmer shaft with adjustable cylinder tips	
016/100	Extention hopper for macrobin use	

STANDARD FEATURES

- Centrifuge basket, no laceration type
- Adjustable and removable rubber roller
- Rubber profile screw welded on the basket
- Mechanical speed variator 2,2 KW
- Destemmer shaft with rubber tips
- Loading hopper with screw
- Filter for liquid inside the loading hopper
- Central opening for removing shaft and basket
- Control panel with emergency stop CE
- Safety protection CE

MODEL	ENGINE HP (Kw)	HOURLY PRODUCTION	SPEED	Ø BASKET	DIMENSION	WEIGHT
JOLLY 100 MV	3 (2,2)	7000-12000 Kg/h	400-600 RPM	400 mm	2250x1050x1400 mm	280 Kg



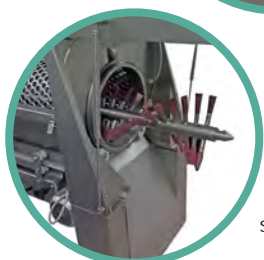
DESTEMMER CRUSHER JOLLY REVERSE



Video



Antilaceration basket



Destemmer shaft



Loading hopper filter



Loading hopper variator



Jolly 60 Reverse

MODEL		
Cod.	Description	€
389	JOLLY 60 REVERSE with crushing unit	
394	JOLLY 100 REVERSE with crushing unit	
395	JOLLY 180 REVERSE with crushing unit	

OPTIONAL		
Cod.	Description	€
0141	Collection with central screw and motor	
016/100	Larger hopper for macrobin use	
9125/R	Industry 4.0 ready with remote control	
096	Washing system for Jolly 60 (as standard on 100-180)	
095	Difference for centrifugal basket in polyethylene for code 389	
9137	Difference for centrifugal basket in polyethylene for code 394	

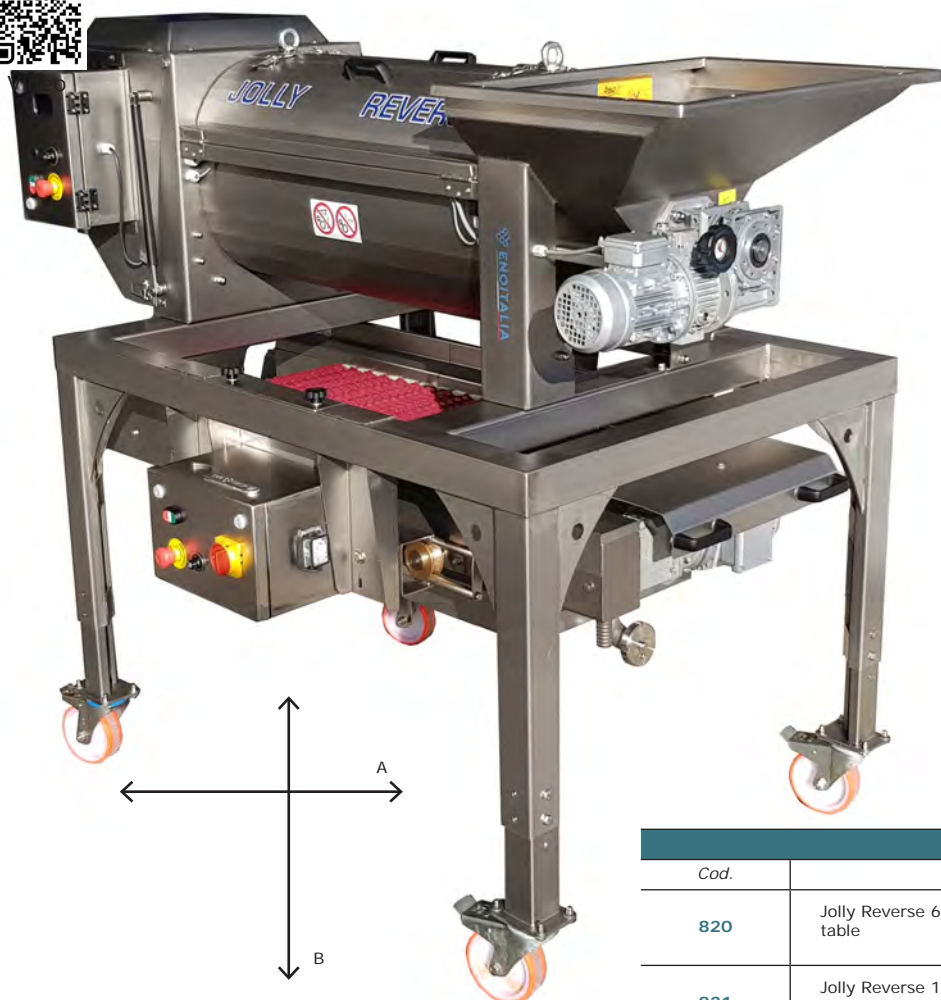
STANDARD FEATURES

- Centrifuge basket, no laceration type in stainless steel
- Adjustable and removable rubber roller, with motor Kw 1,5
- Rubber profile screw welded on the basket
- Loading hopper with gear speed variator KW 0,37
- Electronic speed variator for the shaft and the basket
- Destemmer shaft with adjustable rubber tips
- Automatic cleaning system inside the machine (optional for Jolly 60 Reverse)
- Filter for liquid inside the loading hopper DIN 50
- Telescopic legs
- Backside opening for removing shaft and basket
- Back cover in stainless steel
- Inox control panel
- Stainless steel protective casing

MODEL	ENGINE HP (Kw)	HOURLY PRODUCTION	SPEED	Ø BASKET	A (mm)	B (mm)	DIMENSION	WEIGHT
JOLLY 60	4,5 (3,2)	4000-7000 Kg/h	350-650 RPM	300 mm	970	580-940	2010x830x1190/1340 mm	260 Kg
JOLLY 100	5,5 (4)	7000-12000 Kg/h	350-650 RPM	400 mm	1300	600-960	2600x1050x1530/1930 mm	380 Kg
JOLLY 180	7 (5,5)	15000-19000 Kg/h	350-650 RPM	520 mm	1300	570-970	2880x1220x1550/1950 mm	600 Kg



DESTEMMER CRUSHER JOLLY REVERSE with automatic sorting table



Sorting table



MODEL		
Cod.	Description	€
820	Jolly Reverse 60 with automatic sorting table	
821	Jolly Reverse 100 with automatic sorting table	
822	Jolly Reverse 180 with automatic sorting table	

OPTIONAL		
Cod.	Description	€
831	Motorized roller unit for installation under the automatic sorting table	
823	Difference for motorised waste discharge	
824	Only selection table with rollers on frame max. capacity 7 t/h	
825	Only selection table with rollers on frame max. capacity 10 t/h	

STANDARD FEATURES

- MODEL Jolly 60 Reverse / 100 Reverse destemmer
- Automatic selection roller conveyor
- Roller conveyor install on wheel for adjustable position
- Electronic speed variator for selection roller conveyor
- Removable must collection tank complete with filtration sieve
- Support structure in stainless steel with telescopic legs

MODEL	ENGINE	PRODUCTION	A (mm)	B (mm)	DIMENSION	WEIGHT
820	4,3 Kw	4000-6000 Kg/h	1267/685	722/972	2050x1100x1950/1700	490 Kg
821	5,4 Kw	7000-10000 Kg/h	1267/685	722/972	2600x1250x2250/1980	610 Kg



DESTEMMER CRUSHER JOLLY REVERSE with vibrating sorting table

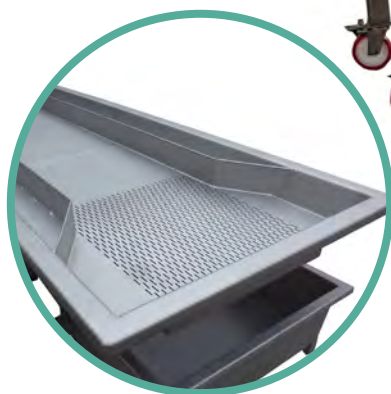


Video



Cod. 818

Cod. 831



STANDARD FEATURES

- MODEL Jolly 60 Reverse / Jolly 100 Reverse destemmer
- Structure in AISI 304 stainless steel to support the destemmer with telescopic legs
- Vibrating table in stainless steel size 800x3000
- Must collection tank on vibrating table with connection DIN 50
- Electronic speed variator for vibrating table
- CE electrical panel

MODEL

Cod.	Description	€
818	Jolly Reverse 60 with vibrating sorting table	
819	Jolly Reverse 100 with vibrating sorting table	

OPTIONAL

Cod.	Description	€
831	Motorized roller unit for installation under the automatic sorting table	
825	Only vibrating sorting table 3000x800	

MODEL	ENGINE	PRODUCTION	DIMENSION	WEIGHT
818	3,6 Kw	4000-6000 Kg/h	2100x3100x1950 mm	640 Kg
819	4,4 Kw	7000-10000 Kg/h	2600x3100x2250 mm	760 Kg



MOTORIZED CRUSHER

Cod. 830+6201



STANDARD FEATURES

- Frame in stainless steel
- Telescopic legs
- n°2 adjustable rubber rollers
- Height under the roller 520/720 mm
- Loading hopper 1475x725 mm
- Loading height 1065/1265 mm
- Engine HP 1,5 threephase with panel control CE

MODEL

Cod.	Description	€
830	Motorized crusher for whole grape and destemmed grape	

OPTIONAL

Cod.	Description	€
004-RV	Electronic speed variator	

MODEL	ENGINE HP (Kw)	CAPACITY	DIMENSION	WEIGHT
830	1,5 (1,1)	10 Ton / h	1475x835x1590/1390 mm	100 Kg



SORTING TABLE NC



Cod. 813



MODEL		
Cod.	Description	€
810	NC 2500 - 2500x600 mm	
811	NC 2500 - 2500x800 mm	
812	NC 3000 - 3000x600 mm	
813	NC 3000 - 3000x800 mm	
814	NC 3500 - 3500x600 mm	
815	NC 3500 - 3500x800 mm	
816	NC 4000 - 4000x600 mm	
817	NC 4000 - 4000x800 mm	

OPTIONAL		
Cod.	Description	€
004-NC	Electronic speed variator	

STANDARD FEATURES

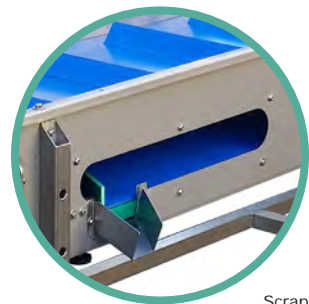
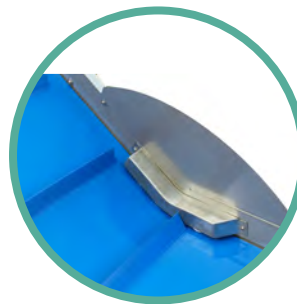
- Sorting table wide Length 600-800 mm
- Frame in stainless steel AISI 304
- Telescopic legs +/- 50 mm
- Gear speed variator kw 0,75 three-phase
- Lateral canal for selected grape
- Hopper for discharging the selected grape
- CE panel control
- N°4 wheel with brake
- Scraper for cleaning

MODEL	INTERNAL WIDE	TABLE HEIGHT	DIMENSION TYPE 2500	DIMENSION TYPE 3000	DIMENSION TYPE 3500	DIMENSION TYPE 4000	CAPACITY
NC 600mm	400	1080-1180 mm	2700x1000x1150 mm 230 Kg	3200x1000x1150 mm 250 Kg	3700x1000x1150 mm 270 Kg	4200x1000x1150 mm 290 Kg	2-10 Ton / h
NC 800mm	600	1080-1180 mm	2700x1200x1150 mm 250 Kg	3200x1200x1150 mm 270 Kg	3700x1200x1150 mm 290 Kg	4200x1200x1150 mm 310 Kg	2-10 Ton / h



SORTING AND LOADING LINE TC

Cod. 429 + Cod. 016



Scraper

STANDARD FEATURES

- Double cover transilon tape, useful width 600 mm profile H. 40 mm, stainless steel coupling hinge
- Structure in AISI 304 stainless steel
- Telescopic legs with 4 stainless steel wheels Ø 100 mm
- Electrical system with emergency stop
- Three-phase motor (single-phase with code 004)
- Mechanical speed variator 1,5 Kw
- Easy cleaning system with inspection doors, liquid scraper and anti-retention structure
- Stainless steel loading hopper

MODEL

Cod.	Description	€
429	TC 4600 - L. 4600 mm	

OPTIONAL

Cod.	Description	€
004/TC	Electronic speed variator three-phase or single-phase	
016/TC	Larger hopper for macrobin use (dimension 1300 x 1100)	

MODEL	ENGINE	LENGHT SORTING TABLE	LENGHT ELEVATOR	HEIGHT TABLE	HEIGHT DISCHARGING	CAPACITY	WEIGHT	DIMENSION
TC 4600	1,5 Kw	3000 mm	1600 mm	800-1050 mm	1870-2000 mm	2-10 Ton/h	230 Kg	4000x800x2500 mm



BELT ELEVATOR SC



STANDARD FEATURES

- Structure in AISI 304 stainless steel
- Double covering food transilon belt width 450 mm with profile H. 50 mm curved
- Stainless steel loading hopper with recovery tank liquids and side pump connection
- Belt cleaning scraper
- Hydraulic piston for height adjust, from 35 to 50 degree
- 4 wheel for driving
- Mechanical speed variator 1,5 Kw
- 380V 50Hz three-phase motor
- Electrical system with emergency stop

MODEL

Cod.	Description	€
423	SC 3000 - L. 3000 mm, width 450 mm	
424	SC 3500 - L. 3500 mm, width 450 mm	
4241	SC 4000 - L. 4000 mm, width 450 mm	
4242	SC 5000 - L. 5000 mm, width 450 mm	
4243	SC 6000 - L. 6000 mm, width 450 mm	

OPTIONAL

Cod.	Description	€
016/SC	Larger hopper for macrobin use	
004/SC	Difference for electronic variator	

MODEL	LENGHT	ENGINE HP (Kw)	HOPPER DIMENSION	LOADING HEIGHT	DISCHARGE HEIGHT	CAPACITY	WEIGHT
SC 3000	3000 mm	2 (1,5)	910x750 mm	710/480 mm	1680/2190 mm	2-10 Ton/h	230 Kg
SC 3500	3500 mm	2 (1,5)	910x750 mm	710/480 mm	1960/2570 mm	2-10 Ton/h	250 Kg
SC 4000	4000 mm	2 (1,5)	910x750 mm	710/480 mm	1800/2600 mm	2-10 Ton/h	320 Kg
SC 5000	5000 mm	2 (1,5)	910x750 mm	710/480 mm	1950/3300 mm	2-10 Ton/h	400 Kg



SCREW ELEVATOR U-200



TABLE COD. 421

A mm	B mm
1880	200
1800	330
1520	410
1170	550



STANDARD FEATURES

- Screw in inox diameter Ø 200mm length 3,00/4,00 mt
- Loading hopper with connection fitting for liquid
- Open cover lid for cleaning
- Winch to adjust the height
- Stainless steel trolley with wheels
- Engine 380V 50Hz three-phase
- CE panel control

MODEL

Cod.	Description	€
421	U-200 - L. 3000 mm	
425	U-200 - L. 4000 mm	

OPTIONAL

Cod.	Description	€
427	Gear speed variator	
016/U	Longer hopper for macrobin use	

MODEL	LENGHT	ENGINE HP (Kw)	HOPPER DIMENSION	LOADING HEIGHT	DISCHARGE HEIGHT	CAPACITY	WEIGHT
U200-3	3000 mm	2 (1,5)	650x720x900 mm	710/480 mm	1600/2000 mm	2-10 Ton/h	90 Kg
U200-4	4000 mm	2 (1,5)	650x720x900 mm	710/480 mm	1900/2500 mm	2-10 Ton/h	130 Kg
TROLLEY	---	---	1330x330x1450 mm	---	---	---	35 Kg



PNEUMATIC PRESS GAMMA



Central loading door



Axial load



STANDARD FEATURES

- Closed cylinder with lateral draining channels
- Sliding and folding door
- Conical bottom collection tank with stainless steel drain valve
- Axial loading DN80 with ball valve
- Electrical panel with PLC touch screen programming with 12 preset and 12 storable programs
- Manual switch to control the press cycle
- Integrated Berker compressor
- Blower for vacuum and inflation Max 0.2 bar
- Wheels for displacement
- Stainless steel protective casing
- Emergency stop with cord and button
- Electrical system with CE safety stop
- Total drain connection DN50 with Gamma 21

MODEL

Cod.	Description	€
6500	GAMMA 5 - single central door	
6501	GAMMA 8 - double door	
6502	GAMMA 11 - double door	
6503	GAMMA 15 - double door	
6504	GAMMA 21 - double door	
6505	GAMMA 26 - double door	

OPTIONAL

Cod.	Description	€
431	Level sensor on the collection tank for automatic driven of an external pump	
432	Legs INOX extension 250 mm	
9125-P	Industry 4.0 ready with remote control	

MODEL	CYLINDER CAPACITY	FERMENTED GRAPE CAPACITY	DESTEMMED CAPACITY	WHOLE GRAPE CAPACITY	ENGINE (Kw)	LOADING VALVE	WEIGHT	DIMENSION
6500	500 lt	1900 Kg	1400 Kg	400 Kg	3,1	80 DIN	260 Kg	1040x2130x1360 mm
6501	800 lt	3040 Kg	2240 Kg	640 Kg	3,5	80 DIN	300 Kg	1040x2410x1460 mm
6502	1100 lt	4180 Kg	3080 Kg	880 Kg	3,7	80 DIN	430 Kg	1270x2520x1590 mm
6503	1500 lt	5700 Kg	4200 Kg	1200 Kg	4	80 DIN	590 Kg	1270x3020x1590 mm
6504	2100 lt	7980 Kg	5880 Kg	1680 Kg	5,6	100 DIN	790 Kg	1600x3180x1860 mm
6505	2600 lt	9000 Kg	6500 Kg	2000 Kg	6	100 DIN	1150 Kg	1600x3200x1990 mm



MANUAL AND AUTOMATIC SVINATORE



STANDARD FEATURES

- Frame in stainless steel AISI 304
- Extratable filter in stainless steel, holes 5x20
- Fitting for connection pump DN 50
- 4 wheels with brakes

MODEL		
Cod.	Description	€
851	Svinatore SV2	
4275	Automatic svinatore with level marker panel control with plug to connect external pump single-phase (pump not included)	
4276	Automatic svinatore with level marker panel control with plug to connect external pump three-phase (PUMP non inclusa)	
4273	Automatic svinatore, with single-phase panel control, and integrated pump ENOS	

MODEL	FITTING	DIMENSION	CAPACITY
SV2	50 garolla	600x700x390 mm	130 lt



AUTOMATIC WASHING TANK



Cod. 997



STANDARD FEATURES

- Frame in stainless steel AISI 304
- Centrifuge pump in stainless steel
- Extractable filter for cleaning
- Connection for total drain
- 4 wheels with brake
- Panel control with emergency stop and termic protection
- Washing head in stainless steel, connection garolla 40 (OPTIONAL)

MODEL

Cod.	Description	€
996	Washing tank - with pump Hp 2 single-phase	
997	Washing tank - with pump Hp 4 three-phase	

OPTIONAL

Cod.	Description	€
993	Stainless steel washing slide complete with anti-scratch profiles and 700mm extension. Terminal sphere d.90	

MODEL	ENGINE HP (Kw)	FITTING	HOPPER DIMENSION	CAPACITY	MAXIMUM HEIGHT TANK'S CYLINDER
996	2 (1,5)	40 garolla	760x1100x370 mm	220 lt	3 mt
997	4 (3)	40 garolla	760x1100x370 mm	220 lt	6 mt



MOTORIZED MIXER



Video

MIXER WITH REMOVABLE SHAFT



MIXER WITH FIXED SHAFT



Cod. 872



Cod. 872 + 874 + 876

STANDARD FEATURES

- Electric motor three-phase, 1,1 Kw/0,8 Kw
- Panel control with emergency stop 24V circuit and transformer (except MIX 90)
- Mechanical seal Grafite/NBR max 12 BAR
- Removable stainless steel shaft length 48 cm.
- Folding helix, automatic opening width 15 cm.
- Inox valve for dosing
- Connection fitting to be indicate at the minimum way 36mm diameter

MODEL

Cod.	Description	€
870	Motorized mixer MIX100	
872	Motorized mixer MIX100 with electronic speed variator Single-phase	
873	Motorized mixer MIX100 with electronic speed variator Three-phase	
880	Mixer with FIXED SHAFT without trolley	

OPTIONAL

Cod.	Description	€
876	Inox support with manual regulation (Height center valve 30-140 cm)	
874	Dosing pump EURO 20, HP 1,5 installed on bord with special fitting	
879	Tool to install the mixer on incline valve (only with option 876)	
7023	Mechanical seal	
7056	Timer (requires code 876 for installation)	

MODEL	ENGINE HP (Kw)	POWER	SPEED	TANK max. CAPACITY	DIMENSION	WEIGHT
870	1,5 (1,1)	Three-phase	1400 RPM	300 hl	230x250x960 mm	20 Kg



CARTON FILTER VIRGILIO and MINI VIRGILIO



Mod. VIRGILIO



Mod. MINI VIRGILIO

MODEL		
Cod.	Description	€
901	Filter MINI VIRGILIO 6 plate (PUMP included)	
902	Filter MINI VIRGILIO 10 plate (PUMP included)	
903	Filter VIRGILIO 10 plate	
904	Filter VIRGILIO 20 plate	
905	Filter VIRGILIO 30 plate	
906	Filter VIRGILIO 40 plate	

OPTIONAL (for filter VIRGILIO)		
Cod.	Description	€
9360	Difference for installation centrifuge pump ENOS 20	
9361	Difference for installation volumetric pump EURO 20	
9362	Difference for installation centrifuge pump 1400 RPM	
907	Reversing plate in inox (for cod. 905 and 906)	
9363	Difference for installation bypass on cod. 9316	

STANDARD FEATURES

FILTER MINIVIRGILIO

- Frame in stainless steel AISI 304
- Plate in stainless steel and PPA dimension 20*20mm
- Pump centrifuge type ENOS 20 in stainless steel, 1,9 bar pressure
- Manometer

FILTER VIRGILIO

- Trolley in stainless steel AISI 304
- Filter plate in stainless steel and PPA, dimension 20x20
- Sample tap in stainless steel
- Stainless steel manometer

MODEL	PLATE NUMBER	CARTON DIMENSION	FILTERING SURFACE M2	WINE CAPACITY L/H	OIL CAPACITY L/H	DIMENSION MM/KG
901	6	20x20 cm	0,24	80-200	80	600x330x440/13
902	10	20x20 cm	0,4	130-280	130	600x330x440/13
903	10	20x20 cm	0,4	130-280	130	600x500x750/32
904	20	20x20 cm	0,8	600-900	300	600x500x750/36
905	30	20x20 cm	1,2	900-1500	400	600x500x750/49
906	40	20x20 cm	1,6	1400-1800	500	600x500x750/54



FILTER 40X40



Sight glass



STANDARD FEATURES

- Trolley
- Impeller pump HP 1,5 with bypass
- Sight glass
- Sample tap
- Bypass circuit
- 2 manometers

MODEL		
Cod.	Description	€
908	Filter 20 plate	
909	Filter 30 plate	
910	Filter 40 plate	
911	Filter 50 plate	

OPTIONAL		
Cod.	Description	€
914	Difference without pump	
912	Kit oil for model 20-30 plate	
913	Kit oil for model 40-50 plate	
915	Reversing plate in inox	

MODEL	PLATE NUMBER	CARTON DIMENSION	FILTERING SURFACE M2	WINE CAPACITY L/H	OIL CAPACITY L/H	DIMENSION MM/KG
908	20	40x40 cm	3,2	2000	600	1200x590x950
909	30	40x40 cm	4,8	3000	700	1200x590x950
910	40	40x40 cm	6,4	4000	800	1500x590x950
911	50	40x40 cm	8,0	5000	900	1700x590x950



ENOITALIA

ENOLOGICAL EQUIPMENTS

Via Provinciale Pisana 162 - 50050 CERRETO GUIDI (FI) - ITALY
tel. +39 0571 588031 - fax +39 0571 588080
www.enoitalia.net - info@enoitalia.net

