

# ENOITALIA

PRICE LIST 2022







# Grape Processing Easy Line



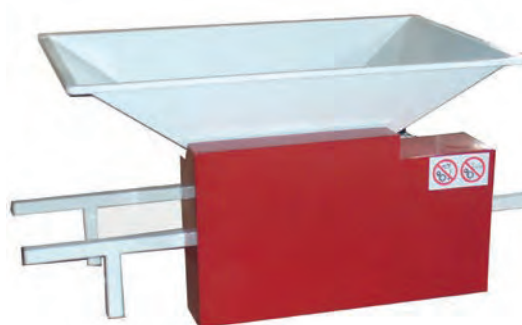




# CRUSHER MICROENO, MINIENO, ENO 1 e ENO 2



ENO 1, ENO 2 - Stainless steel hopper, with engine



ENO 1, ENO 2 - smalted with engine



MICROENO, MINIENO, ENO 1, ENO 2 - inox hopper with flywheel




Safety protection

## STANDARD FEATURES

- Autoadjustable food aluminium rollers
- CE motor with emergency stop
- Cartoon box packaging
- Steel protective casing

## OPTIONAL

Cod.	Description	€
006	Safety protection (required to issue a conformity declaration) 	

MODEL	ENGINE HP (Kw)	HOURLY PRODUCTION	HOPPER	DIMENSION mm		WEIGHT		ROLLER LENGHT
				with flywheel	with engine	with flywheel	with engine	
MICROENO	---	200 - 450 Kg/h	555x455 mm	860x365x470	---	14 Kg	---	150 mm
MINIENO	---	300 - 500 Kg/h	650x470 mm	1000x390x490	---	18 Kg	---	220 mm
ENO 1	1 (0,75)	500 - 700 Kg/h	850x560 mm	1210x580x350	1210x500x570	22 Kg	33 Kg	220 mm
ENO 2	1 (0,75)	600 - 800 Kg/h	1000x630 mm	1210x620x400	1210x550x620	29 Kg	40 Kg	280 mm

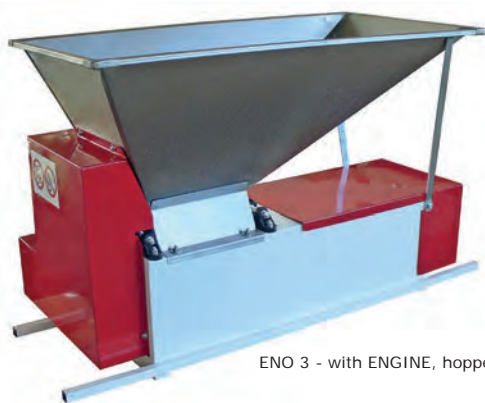


# CRUSHER DESTEMMER ENO 3

ENO 3 INOX - with ENGINE, hopper and agitator Inox



ENO 3 - with flywheel smalted hopper and agitator



ENO 3 - with ENGINE, hopper Inox



Safety protection


## STANDARD FEATURES

- Autoadjustable food aluminium rollers
- CE motor with emergency stop
- Stainless steel basket
- Cartoon box packaging
- Steel protective casing

## MODEL

Cod.	Description	€
521	ENO 3 - smalted hopper and agitator	
522	ENO 3 - hopper and agitator Inox	
525	ENO 3 INOX - hopper and agitator Inox	
523	ENO 3 - with ENGINE, smalted hopper and agitator	
524	ENO 3 - with ENGINE, hopper and agitator Inox	
526	ENO 3 INOX - with ENGINE, hopper and agitator Inox	

## OPTIONAL

Cod.	Description	€
009	Inox stand with slide	
006	Safety protection (required to issue a conformity declaration) 	

MODEL	ENGINE HP (Kw)	HOURLY PRODUCTION	HOPPER	DIMENSION mm		WEIGHT		ROLLER LENGHT
				with flywheel	with engine	with flywheel	with engine	
ENO 3	1 (0,75)	1000 - 1200 Kg/h	850x500 mm	1210x550x690	1210x600x690	40 Kg	51 Kg	220 mm
STAND	---	---	---	1100x500x250	1210x500x620	8 Kg	---	---



# DESTEMMER ENO 10



ENO 10 - with engine, inox



ENO 10 - with engine, smalted



Inox stand with slide



Safety protection

## STANDARD FEATURES

- CE motor with emergency stop
- Carton box packaging
- Steel safety protection
- steel protective casing

## MODEL

Cod.	Description	€
012	ENO 10 - with ENGINE, smalted	
212	ENO 10 INOX - with ENGINE, Inox	

## OPTIONAL

Cod.	Description	€
009	Inox stand with slide	
006	Safety protection (required to issue a conformity declaration)	



MODEL	ENGINE HP (Kw)	HOURLY PRODUCTION	SPEED	DIMENSION	WEIGHT
ENO 10	1 (0,75)	1000 - 1200 Kg/h	500 RPM	1210x600x690 mm	50 Kg
STAND	---	---	---	1100x550x620 mm	8 Kg



# CRUSHER DESTEMMER ENO 15



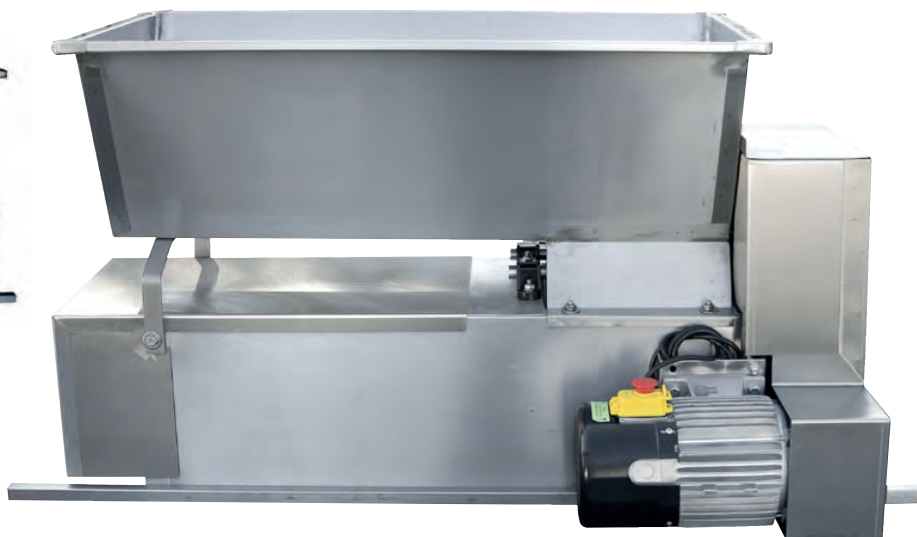
Video

Cod. 027 - 028

ENO 15 INOX - With engine



Safety protection



ENO 15 - with engine, smalted

## STANDARD FEATURES

- Adjustable aluminium roller for alimentary use
- HP 1 engine with CE emergency stop
- Stainless steel basket
- Cartoon box packing
- Steel protective casing

## MODEL

Cod.	Description	€
025	ENO 15 - Aluminium roller, smalted hopper	
024	ENO 15 - Rubber roller, smalted hopper	
027	ENO 15 - Aluminium roller, Inox hopper	
028	ENO 15 - Rubber roller, Inox hopper	
225	ENO 15 INOX - Aluminium roller	
224	ENO 15 INOX - Rubber roller	

## OPTIONAL

Cod.	Description	€
009	Inox stand with slide	
006	Safety protection (required to issue a conformity declaration)	



MODEL	ENGINE HP (Kw)	HOURLY PRODUCTION	SPEED	DIMENSION HOPPER	DIMENSION	WEIGHT
ENO 15	1 (0,75)	1600 - 1800 Kg/h	500 RPM	850x480	1210x600x630 mm	54 Kg
STAND	---	---	---	---	1100x550x620 mm	8 Kg





# CRUSHER DESTEMMER SEMICENTRIFUGAL ENO 20



Rubber roller



ENO 20 INOX - with engine, Inox



ENO 20 - with engine, salted hopper



Safety protection


## STANDARD FEATURES

- CE motor with emergency stop
- Stainless steel basket
- Stainless steel centrifuge pump
- Stretch wrap packaging
- Steel protective casing

## MODEL

Cod.	Description	€
482	ENO 20 - Aluminium roller, salted	
483	ENO 20 - Rubber roller, salted	
485	ENO 20 INOX - Aluminium roller	
486	ENO 20 INOX - Rubber roller	

## OPTIONAL

Cod.	Description	€
006	Safety protection (required to issue a conformity declaration) 	

MODEL	ENGINE HP (Kw)	HOURLY PRODUCTION	SPEED	PUMP	PUMP HEADS	DIMENSION	WEIGHT
ENO 20	2 (1,5)	1500 - 1800 Kg/h	500 RPM	60 Ø	15 Oriz. - 5 Vert.	1120x600x960 mm	70 Kg





# DESTEMMER CRUSHER SEMICENTRIFUGE ARNO 15, 25, 35



ARNO INOX - with engine



ARNO - with engine, smalted



Safety protection




Opening system

MODEL		
Cod.	Description	€
033	ARNO 15 - smalted	
233	ARNO 15 INOX	
042	ARNO 25 - smalted	
242	ARNO 25 INOX	
052	ARNO 35 - smalted	
252	ARNO 35 INOX	

## STANDARD FEATURES

- CE motor with emergency stop
- Stainless steel basket
- Stainless steel centrifuge pump
- Stretch wrap packaging
- Steel protective casing

## OPTIONAL

Cod.	Description	€
006	Safety protection (required to issue a conformity declaration) 	

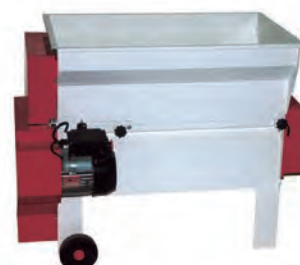
MODEL	ENGINE HP (Kw)	HOURLY PRODUCTION	SPEED	PUMP	PUMP HEADS	DIMENSION	WEIGHT
ARNO 15	2 (1,5)	2000 Kg/h	500 RPM	60/50 Ø	15 Oriz. - 5 Vert.	1100x700x900 mm	78 Kg
ARNO 25	2,5 (1,8)	3000 Kg/h	500 RPM	60 Ø	15 Oriz. - 5 Vert.	1200x700x900 mm	86 Kg
ARNO 35	2,5 (1,8)	3800 Kg/h	500 RPM	60 Ø	15 Oriz. - 5 Vert.	1300x700x900 mm	100 Kg



# DESTEMMER CRUSHER SEMICENTRIFUGE JOLLY 15/E, 25/E, 35/E



JOLLY Inox - with engine



JOLLY - with engine, smalted



Safety protection



Opening system


## STANDARD FEATURES

- CE motor with emergency stop
- Stainless steel basket
- Stainless steel centrifuge pump
- Stretch wrap packaging
- steel protective casing

## MODEL

Cod.	Description	€
063	JOLLY 15/E - smalted	
263	JOLLY 15/E INOX	
082	JOLLY 25/E - smalted	
282	JOLLY 25/E INOX	
092	JOLLY 35/E - smalted	
292	JOLLY 35/E INOX	

## OPTIONAL

Cod.	Description	€
006	Safety protection (required to issue a conformity declaration) 	

MODEL	ENGINE HP (Kw)	HOURLY PRODUCTION	SPEED	PUMP	PUMP HEADS	DIMENSION	WEIGHT
JOLLY 15/E	2 (1,5)	2000 Kg/h	500 RPM	60/50 Ø	15 Oriz. - 5 Vert.	1130x680x900 mm	80 Kg
JOLLY 25/E	2,5 (1,8)	3000 Kg/h	500 RPM	60 Ø	15 Oriz. - 5 Vert.	1230x680x900 mm	94 Kg
JOLLY 35/E	2,5 (1,8)	3800 Kg/h	500 RPM	60 Ø	15 Oriz. - 5 Vert.	1330x680x900 mm	110 Kg





# Grape Processing Professional Line







# DESTEMMER CRUSHER SEMICENTRIFUGE JOLLY AR



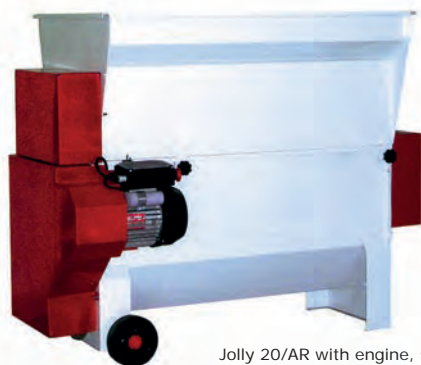
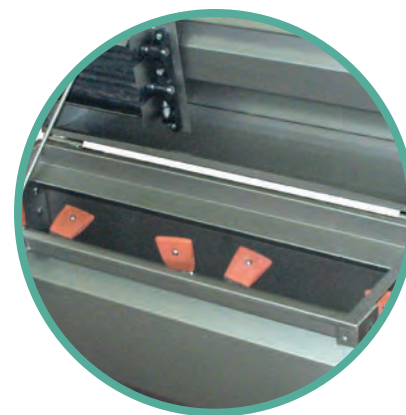
Video



Jolly AR INOX with engine



Opening system



Jolly 20/AR with engine, smalted

## STANDARD FEATURES

- Autoadjustable rubber food rollers
- Destemmer shaft with rubber tips
- CE motor with emergency stop
- Stainless steel basket
- Stainless steel centrifuge pump
- Stretch wrap packaging
- Steel protective casing

## MODEL

Cod.	Description	€
102	JOLLY 20/AR - smalted with safety protection	
302	JOLLY 20/AR INOX - with safety protection	
312	JOLLY 30/AR INOX - with safety protection	

## OPTIONAL

Cod.	Description	€
006	Safety protection, <b>in addition to the standard</b>	
007	Difference for stainless steel screw with food-grade rubber coating (only for codes 302 and 312)	

MODEL	ENGINE HP (Kw)	HOURLY PRODUCTION	SPEED	PUMP	PUMP HEADS	DIMENSION	WEIGHT
JOLLY 20/AR	2 (1,5)	2000-2300 Kg/h	500 RPM	60 Ø	15 Oriz. - 5 Vert.	1180x680x900 mm	112 Kg
JOLLY 30/AR	2,5 (1,8)	3000-3300 Kg/h	500 RPM	60 Ø	15 Oriz. - 5 Vert.	1280x680x900 mm	128 Kg



# DESTEMMER CRUSHER CENTRIFUGE JOLLY 50/A



JOLLY 50/A - INOX with engine



Opening system



JOLLY 50/A- with engine, smalted

## STANDARD FEATURES

- Stainless steel centrifugal basket
- Destemmer shaft with rubber blades
- CE motor with emergency stop
- Stainless steel centrifuge pump
- Stretch wrap packaging
- steel protective casing

## MODEL

Cod.	Description	€
122	JOLLY 50/A - smalted, complete with safety protection	
322	JOLLY 50/A INOX complete with safety protection	

## OPTIONAL

Cod.	Description	€
006	Safety protection (in addition to the standard supplied)	
007	Difference for stainless steel screw with food-grade rubber coating	

MODEL	ENGINE HP (Kw)	HOURLY PRODUCTION	SPEED	PUMP	PUMP HEADS	Ø BASKET	DIMENSION	WEIGHT
JOLLY 50/A	3 (2,2)	4500-5500 Kg/h	500 RPM	60 Ø	18 Oriz. - 5 Vert.	300 mm	1500x800x970 mm	130 Kg



# DESTEMMER CRUSHER CENTRIFUGE BETA



Beta INOX with engine special voltage



HOPPER Beta with filter



Opening system



## STANDARD FEATURES

- Stainless steel centrifugal basket
- Destemmer shaft with rubber tips
- CE motor with emergency stop
- Stainless steel centrifuge pump
- Stretch wrap packaging
- Steel protective casing

## MODEL

Cod.	Description	€
332	BETA 60 INOX with safety protection	
342	BETA 90 INOX with safety protection	
352	BETA 120 INOX with safety protection	

## OPTIONAL

Cod.	Description	€
006	Safety protection (in addition to the standard supplied)	
353	Inox flange with conical fitting 80-60 garolla type instead of centrifuge pump	

MODEL	ENGINE HP (Kw)	HOURLY PRODUCTION	SPEED	PUMP	PUMP HEADS	Ø BASKET	DIMENSION	WEIGHT
BETA 60	3 (2,2)	5000-6000 Kg/h	500 RPM	60 Ø	18 Oriz. - 5 Vert.	300 mm	1650x1050x1100 mm	160 Kg
BETA 90	4 (3)	8000-10000 Kg/h	500 RPM	60 Ø	20 Oriz. - 6 Vert.	400 mm	1950x1100x1100 mm	200 Kg
BETA 120	5,5 (4)	10000-12000 Kg/h	500 RPM	60 Ø	20 Oriz. - 6 Vert.	500 mm	2000x1100x1180 mm	230 Kg





# DESTEMMER CRUSHER SEMICENTRIFUGE JOLLY 40 MV



Cod. 390 + Cod. 004



Roller conveyor and collection tank



Cod. 396 + Cod. 001

MODEL		
Cod.	Description	€
390	JOLLY 40 MV - with crushing unit and collection tank with safety protection included	
396	JOLLY 40 MV - with crushing unit, without collection tank, with higher inox wheels. With safety protection.	

OPTIONAL		
Cod.	Description	€
001	Manual speed variator	
004/40	Electronic speed variator	
007	Inox loading screw with rubber profile	
019/40	Additional basket with different hole	

## STANDARD FEATURES

- Professional basket no-laceration semicentrifuge type
- Adjustable and removable rubber rollers
- Engine 1,8 KW with emergency stop CE
- Collection tank with central screw, completely removable, double connection DN80
- Destemmer shaft with rubber tips
- N°4 wheels Ø 100 mm
- Safety protection CE

MODEL	ENGINE HP (Kw)	HOURLY PRODUCTION	SHAFT SPEED	ATTACCO PUMP	DIMENSION mm	WEIGHT
JOLLY 40MV	2,5 (1,8) MF 2,5 (1,8) TF	2000-4000 Kg/h	400-600 RPM	80-60 Ø	1390x800x1320 (1370)	160 Kg



# DESTEMMER CRUSHER CENTRIFUGE JOLLY 40 REVERSE



Control panel



Cod. 014 collection tank



## STANDARD FEATURES

- Centrifuge professional basket, no laceration type
- Adjustable and removable rubber rollers
- Destemmer shaft with rubber tips
- Mechanical speed variator 1,1 KW for destemming unit
- Motor gear reducer 0,75kw for crushing unit
- Central opening
- N.4 wheels
- Safety protection

## MODEL

Cod.	Description	€
<b>388</b>	JOLLY 40 Reverse, with crushing unit, electronic variator, safety protection	

## OPTIONAL

Cod.	Description	€
<b>014</b>	Collection tank with central screw, double connection DN80, cardan shaft	
<b>019/60</b>	Additional basket with different hole	
<b>3881</b>	Difference for single-phase motorization (panel separate from the machine body)	

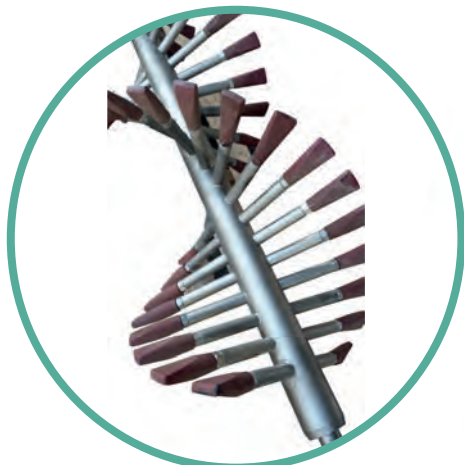
MODEL	ENGINE HP (Kw)	HOURLY PRODUCTION	SHAFT SPEED	Ø BASKET	DIMENSION mm	WEIGHT
<b>JOLLY 40</b>	2,5 (1,8) MF/TF	2000-4000 Kg/h	450-600 RPM	250	1800x880x1350	180 Kg



# DESTEMMER CRUSHER INOX JOLLY 60 MV



Video



Cod. 003



Opening system

## STANDARD FEATURES

- Centrifuge professional basket, no laceration type
- Adjustable and removable rubber roller
- Rubber profile screw welded on the basket
- Electronic speed variator 2,2 Kw
- Destemmer shaft with rubber tips
- Central opening for removing shaft and basket
- Removable control panel with emergency stop
- N°4 wheels Ø 150 mm
- Safety protection CE

## MODEL

Cod.	Description	€
<b>391</b>	JOLLY 60 MV - with electronic speed variator, safety protection and crusher unit	

## OPTIONAL

Cod.	Description	€
<b>014-60</b>	Collection tank with central screw, double connection DN80, cardan shaft	
<b>003-60</b>	Destemmer shaft with adjustable cylinder	
<b>016-60</b>	Larger hopper for macrobin use	
<b>007</b>	Inox loading screw with rubber profile	
<b>019-60</b>	Additional basket with different hole	

MODEL	ENGINE HP (Kw)	HOURLY PRODUCTION	SHAFT SPEED	Ø BASKET	FITTING PUMP	DIMENSION mm	WEIGHT
JOLLY 60 MV	2,25 (1,6) MF/TF	4000-6000 Kg/h	400-600 RPM	300 mm	60-80	1600x840x1370	180 Kg



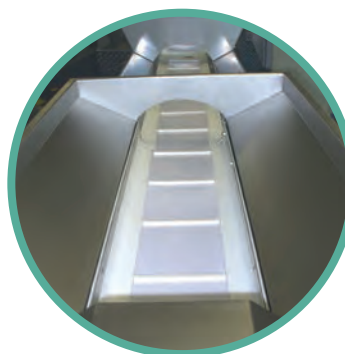


# DESTEMMER CRUSHER INOX JOLLY 60 MV

## *with integrated sorting line*



Video



### STANDARD FEATURES

- Centrifuge professional basket, no laceration type
- Adjustable and removable rubber rollers
- Rubber profile screw welded on the basket
- Mechanical speed variator 0,5 KW for sorting table
- Electronic speed variator 2,2 KW for destemmer
- Destemmer shaft with rubber plate
- No loading screw
- Removable control panel with emergency stop

### MODEL

Cod.	Description	€
391+008	JOLLY 60 MV - with integrated sorting table, crushing unit, speed variator	

### OPTIONAL

Cod.	Description	€
014-60	Collection tray with central screw, cardan transmission. Double pump fitting DN 80	
003-60	Difference for destemmer shaft with adjustable cylindrical	

MODEL	ENGINE HP (Kw)	HOURLY PRODUCTION	SPEED	PUMP	LOADING HOPPER	Ø BASKET	DIMENSION	WEIGHT
JOLLY 60 MV	4 (3) TF	4000-6000 Kg/h	400-600 RPM	60-80 Ø	825X650 mm	300 mm	4230x840x1470 mm	300 Kg



# DESTEMMER CRUSHER JOLLY 100 MV



Cod. 392 + 004

Cod. 003



Cod. 0141

## STANDARD FEATURES

- Centrifuge basket, no laceration type
- Adjustable and removable rubber roller
- Rubber profile screw welded on the basket
- Mechanical speed variator 2,2 KW
- Destemmer shaft with rubber tips
- Loading hopper with screw
- Filter for liquid inside the loading hopper
- Central opening for removing shaft and basket
- Control panel with emergency stop CE
- Safety protection CE

## MODEL

Cod.	Description	€
<b>392</b>	JOLLY 100 MV - with gear speed variator and crushing unit	

## OPTIONAL

Cod.	Description	€
<b>0141</b>	Collection hopper with central screw, engine HP 1. Double pump fitting DN 80	
<b>004/100</b>	Difference for electronic speed variator	
<b>003-100</b>	Difference for destemmer shaft with adjustable cylinder tips	
<b>016/100</b>	Larger hopper for macrobin use	

MODEL	ENGINE HP (Kw)	HOURLY PRODUCTION	SPEED	Ø BASKET	DIMENSION	WEIGHT
<b>JOLLY 100 MV</b>	3 (2,2)	7000-12000 Kg/h	400-600 RPM	400 mm	2250x1050x1400 mm	280 Kg



# DESTEMMER CRUSHER JOLLY REVERSE



Video



Antilaceration basket



Destemmer shaft



Jolly 100 Reverse



Jolly 60 Reverse

## STANDARD FEATURES

- Centrifuge basket, no laceration type in stainless steel
- Adjustable and removable rubber roller, with motor Kw 1,5
- Rubber profile screw welded on the basket
- Loading hopper with gear speed variator KW 0,37
- Electronic speed variator for the shaft and the basket
- Destemmer shaft with adjustable rubber tips
- Automatic cleaning system inside the machine (optional for Jolly 60 Reverse)
- Filter for liquid inside the loading hopper DIN 50
- Telescopic legs
- Backside opening for removing shaft and basket
- Back cover in stainless steel
- Inox control panel
- Stainless steel protective casing

## MODEL

Cod.	Description	€
<b>389</b>	JOLLY 60 REVERSE with crushing unit	
<b>394</b>	JOLLY 100 REVERSE with crushing unit	
<b>395</b>	JOLLY 180 REVERSE with crushing unit	

## OPTIONAL

Cod.	Description	€
<b>0141</b>	Collection with central screw and motor	
<b>016/100</b>	Larger hopper for macrobin use	
<b>9125/R</b>	Industry 4.0 ready with remote control	
<b>096</b>	Washing system for Jolly 60	
<b>095</b>	Difference for centrifugal basket in polyethylene (code 395 excluded)	

MODEL	ENGINE HP (Kw)	HOURLY PRODUCTION	SPEED	Ø BASKET	A (mm)	B (mm)	DIMENSION	WEIGHT
<b>JOLLY 60</b>	4,5 (3,2)	4000-7000 Kg/h	350-650 RPM	300 mm	1300	580-940	2010x830x1340/1740 mm	260 Kg
<b>JOLLY 100</b>	5,5 (4)	7000-12000 Kg/h	350-650 RPM	400 mm	1300	600-960	2600x1050x1530/1930 mm	380 Kg
<b>JOLLY 180</b>	7 (5,5)	15000-19000 Kg/h	350-650 RPM	520 mm	1300	510-690	2880x1220x1550/1950 mm	600 Kg





# DESTEMMER CRUSHER JOLLY REVERSE

## with automatic sorting table



Sorting table



### STANDARD FEATURES

- MODEL Jolly 60 Reverse / 100 Reverse destemmer
- Automatic selection roller conveyor
- Roller conveyor install on wheel for adjustable position
- Electronic speed variator for selection roller conveyor
- Removable must collection tank complete with filtration sieve
- Support structure in stainless steel with telescopic legs

### MODEL

Cod.	Description	€
820	Jolly Reverse 60 with automatic sorting table	
821	Jolly Reverse 100 with automatic sorting table	

### OPTIONAL

Cod.	Description	€
831	Motorized roller unit for installation under the automatic sorting table	

MODEL	ENGINE	PRODUCTION	A (mm)	B (mm)	DIMENSION	WEIGHT
820	4,3 Kw	4000-6000 Kg/h	1267/685	722/972	2050x1100x1950/1700	490 Kg
821	5,4 Kw	7000-10000 Kg/h	1267/685	722/972	2600x1250x2250/1980	610 Kg



# DESTEMMER CRUSHER JOLLY REVERSE

## with vibrating sorting table



Cod. 389+094+095+818+831



### STANDARD FEATURES

- MODEL Jolly 60 Reverse / Jolly 100 Reverse destemmer
- Structure in AISI 304 stainless steel to support the destemmer with telescopic legs
- Vibrating table in stainless steel size 800x3000
- Must collection tank on vibrating table with connection DIN 50
- Electronic speed variator for vibrating table
- CE electrical panel

### MODEL

Cod.	Description	€
<b>818</b>	Jolly Reverse 60 with vibrating sorting table	
<b>819</b>	Jolly Reverse 100 with vibrating sorting table	

### OPTIONAL

Cod.	Description	€
<b>831</b>	Motorized roller unit for installation under the automatic sorting table	

MODEL	ENGINE	PRODUCTION	DIMENSION	WEIGHT
<b>818</b>	3,6 Kw	4000-6000 Kg/h	2100x3100x1950 mm	640 Kg
<b>819</b>	4,4 Kw	7000-10000 Kg/h	2600x3100x2250 mm	760 Kg



# MOTORIZED CRUSHER



Cod. 830+6201



## STANDARD FEATURES

- Frame in stainless steel
- Telescopic legs
- n°2 adjustable rubber rollers
- Height under the roller 520/720 mm
- Loading hopper 1475x725 mm
- Loading height 1065/1265 mm
- Engine HP 1,5 threephase with panel control CE

## MODEL

Cod.	Description	€
<b>830</b>	Motorized crusher for whole grape and destemmed grape	

## OPTIONAL

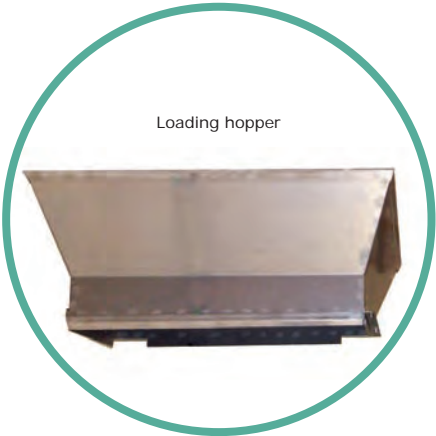
Cod.	Description	€
<b>004-RV</b>	Electronic speed variator	

MODEL	ENGINE HP (Kw)	CAPACITY	DIMENSION	WEIGHT
<b>830</b>	1,5 (1,1)	10 Ton / h	1475x835x1590/1390 mm	100 Kg

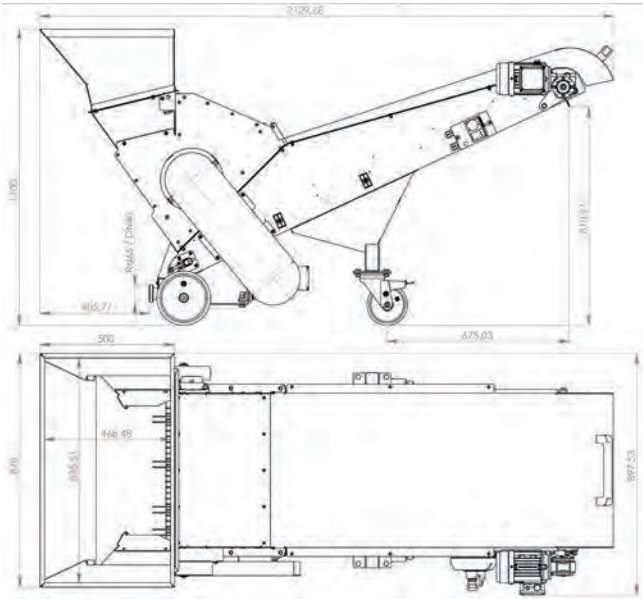




# AUTOMATIC STALKS SHATTER with belt



Loading hopper



**STANDARD FEATURES**

- Structure in AISI 304 stainless steel
- Motorized evacuation belt
- Stainless steel crushing knives
- Transport wheels with locking brake
- DIN40 liquid outlet fittings

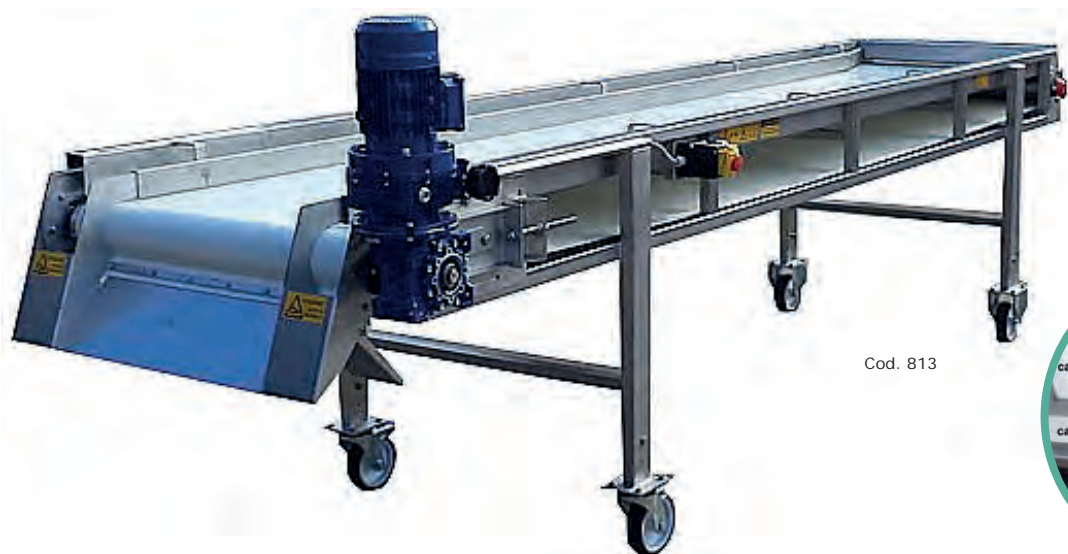
**MODEL**

Cod.	Description	€
840	Stainless steel shredder-stalks	

MODEL	POWER	POWER	CAPACITY	DIMENSION	WEIGHT
840	1,68 Kw	Three-phase	10-25 Ton/h	1950x850x1030 mm	150 Kg



# SORTING TABLE NC



## STANDARD FEATURES

- Sorting table wide Length 600-800 mm
- Frame in stainless steel AISI 304
- Telescopic legs +/- 50 mm
- Gear speed variator kw 0,75 three-phase
- Lateral canal for selected grape
- Hopper for discharging the selected grape
- CE panel control
- N°4 wheel with brake
- Scraper for cleaning

## MODEL

Cod.	Description	€
810	NC 2500 - 2500x600 mm	
811	NC 2500 - 2500x800 mm	
812	NC 3000 - 3000x600 mm	
813	NC 3000 - 3000x800 mm	
814	NC 3500 - 3500x600 mm	
815	NC 3500 - 3500x800 mm	
816	NC 4000 - 4000x600 mm	
817	NC 4000 - 4000x800 mm	

## OPTIONAL

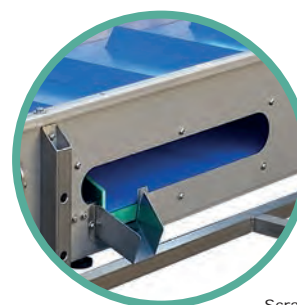
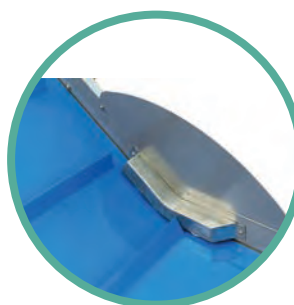
Cod.	Description	€
004-NC	Electronic speed variator	

MODEL	INTERNAL WIDE	TABLE HEIGHT	DIMENSION TYPE 2500	DIMENSION TYPE 3000	DIMENSION TYPE 3500	DIMENSION TYPE 4000	CAPACITY
NC 600mm	400	1080-1180 mm	2700x1000x1150 mm 230 Kg	3200x1000x1150 mm 250 Kg	3700x1000x1150 mm 270 Kg	4200x1000x1150 mm 290 Kg	2-10 Ton / h
NC 800mm	600	1080-1180 mm	2700x1200x1150 mm 250 Kg	3200x1200x1150 mm 270 Kg	3700x1200x1150 mm 290 Kg	4200x1200x1150 mm 310 Kg	2-10 Ton / h



# SORTING AND LOADING LINE TC

Cod. 429 + Cod. 016



Scraper

## STANDARD FEATURES

- Double cover transilon tape, useful width 600 mm profile H. 40 mm, stainless steel coupling hinge
- Structure in AISI 304 stainless steel
- Telescopic legs with 4 stainless steel wheels Ø 100 mm
- Electrical system with emergency stop
- Three-phase motor (single-phase with code 004)
- Mechanical speed variator 1,5 Kw
- Easy cleaning system with inspection doors, liquid scraper and anti-retention structure
- Stainless steel loading hopper

## MODEL

Cod.	Description	€
429	TC 4600 - L. 4600 mm	

## OPTIONAL

Cod.	Description	€
004/TC	Electronic speed variator three-phase or single-phase	
016/TC	Larger hopper for macrobin use (dimension 1300 x 1100)	

MODEL	ENGINE	LENGHT SORTING TABLE	LENGHT ELEVATOR	HEIGHT TABLE	HEIGHT DISCHARGING	CAPACITY	WEIGHT	DIMENSION
TC 4600	1,5 Kw	3000 mm	1600 mm	800-1050 mm	1870-2000 mm	2-10 Ton/h	230 Kg	4000x800x2500 mm





# BELT ELEVATOR SC



## STANDARD FEATURES

- Structure in AISI 304 stainless steel
- Double covering food transilon belt width 450 mm with profile H. 50 mm
- Stainless steel loading hopper with recovery tank liquids and side pump connection
- Belt cleaning scraper
- Hydraulic piston for height adjust, from 35 to 50 degree
- 4 wheel for driving
- Mechanical speed variator 1,5 Kw
- 380V 50Hz three-phase motor
- Electrical system with emergency stop

## MODEL

Cod.	Description	€
423	SC 3000 - L. 3000 mm, Lenght 450 mm	
424	SC 3500 - L. 3500 mm, Lenght 450 mm	
4241	SC 4000 - L. 4000 mm, Lenght 450 mm	
4242	SC 5000 - L. 5000 mm, Lenght 450 mm	
4243	SC 6000 - L. 6000 mm, Lenght 450 mm	

## OPTIONAL

Cod.	Description	€
016/SC	Larger hopper for macrobin use	

MODEL	LENGHT	ENGINE HP (Kw)	HOPPER DIMENSION	LOADING HEIGHT	DISCHARGE HEIGHT	CAPACITY	WEIGHT
SC 3000	3000 mm	2 (1,5)	910x750 mm	710/480 mm	1680/2190 mm	2-10 Ton/h	230 Kg
SC 3500	3500 mm	2 (1,5)	910x750 mm	710/480 mm	1960/2570 mm	2-10 Ton/h	250 Kg
SC 4000	4000 mm	2 (1,5)	910x750 mm	710/480 mm	1800/2600 mm	2-10 Ton/h	320 Kg
SC 5000	5000 mm	2 (1,5)	910x750 mm	710/480 mm	1950/3300 mm	2-10 Ton/h	400 Kg



# SCREW ELEVATOR U-200



A mm	B mm
1880	200
1800	330
1520	410
117	550



## STANDARD FEATURES

- Screw in inox diameter Ø 200mm lenght 3,00/4,00 mt
- Loading hopper with connection fitting for liquid
- Open cover lid for cleaning
- Winch to adjust the height
- Stainless steel trolley with wheels
- Engine 380V 50Hz three-phase
- CE panel control

## MODEL

Cod.	Description	€
421	U-200 - L. 3000 mm	
425	U-200 - L. 4000 mm	

## OPTIONAL

Cod.	Description	€
427	Gear speed variator	
016/U	Longer hopper for macrobin use	

MODEL	LENGHT	ENGINE HP (Kw)	HOPPER DIMENSION	LOADING HEIGHT	DISCHARGE HEIGHT	CAPACITY	WEIGHT
U200-3	3000 mm	2 (1,5)	650x720x900 mm	710/480 mm	1600/2000 mm	2-10 Ton/h	90 Kg
U200-4	4000 mm	2 (1,5)	650x720x900 mm	710/480 mm	1900/2500 mm	2-10 Ton/h	130 Kg
TROLLEY	---	---	1330x330x1450 mm	---	---	---	35 Kg



# PNEUMATIC PRESS GAMMA

Central loading door



Axial load



## STANDARD FEATURES

- Closed cylinder with lateral draining channels
- Sliding and folding door
- Conical bottom collection tank with stainless steel drain valve
- Axial loading DN80 with ball valve
- Electrical panel with PLC touch screen programming with 10 preset and 99 storable programs
- Manual switch to control the press cycle
- Integrated Berker compressor
- Blower for vacuum and inflation Max 0.2 bar
- Wheels for displacement
- Stainless steel protective casing
- Emergency stop with cord and button
- Electrical system with CE safety stop
- Total drain connection DN50 with Gamma 21

## MODEL

Cod.	Description	€
6500	GAMMA 5 - single central door	
6501	GAMMA 8 - double door	
6502	GAMMA 11 - double door	
6503	GAMMA 15 - double door	
6504	GAMMA 21 - double door	

## OPTIONAL

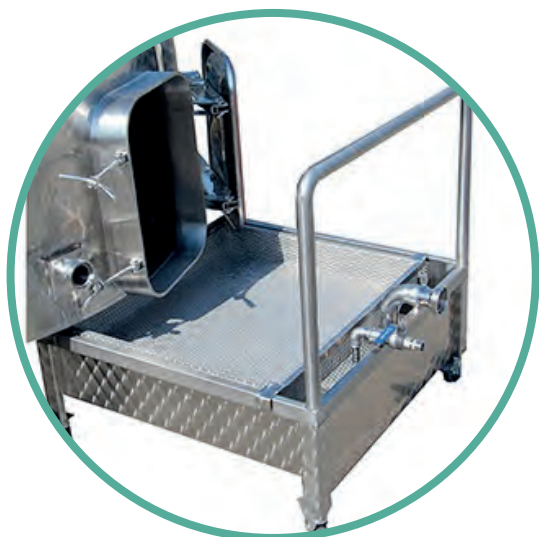
Cod.	Description	€
431	Level sensor on the collection tank for automatic driven of an external pump	
432	Legs INOX extension 400 mm	
9125-P	Industry 4.0 ready with remote control	

MODEL	CYLINDER CAPACITY	FERMENTED GRAPE CAPACITY	DESTEMMED CAPACITY	WHOLE GRAPE CAPACITY	ENGINE (Kw)	LOADING VALVE	WEIGHT	DIMENSION
GAMMA 5	500 lt	1900 Kg	1400 Kg	400 Kg	3,1	80 DIN	260 Kg	1040x2130x1360 mm
GAMMA 8	800 lt	3040 Kg	2240 Kg	640 Kg	3,5	80 DIN	300 Kg	1040x2410x1460 mm
GAMMA 11	1100 lt	4180 Kg	3080 Kg	880 Kg	3,7	80 DIN	430 Kg	1270x2520x1590 mm
GAMMA 15	1500 lt	5700 Kg	4200 Kg	1200 Kg	4	80 DIN	590 Kg	1270x3020x1590 mm
GAMMA 21	2100 lt	7980 Kg	5880 Kg	1680 Kg	5,6	100 DIN	790 Kg	1600x3180x1860 mm





# MANUAL AND AUTOMATIC SVINATORE



## STANDARD FEATURES

- Frame in stainless steel AISI 304
- Extratable filter in stainless steel
- Fitting for connection pump DN 50
- 4 wheels with brakes

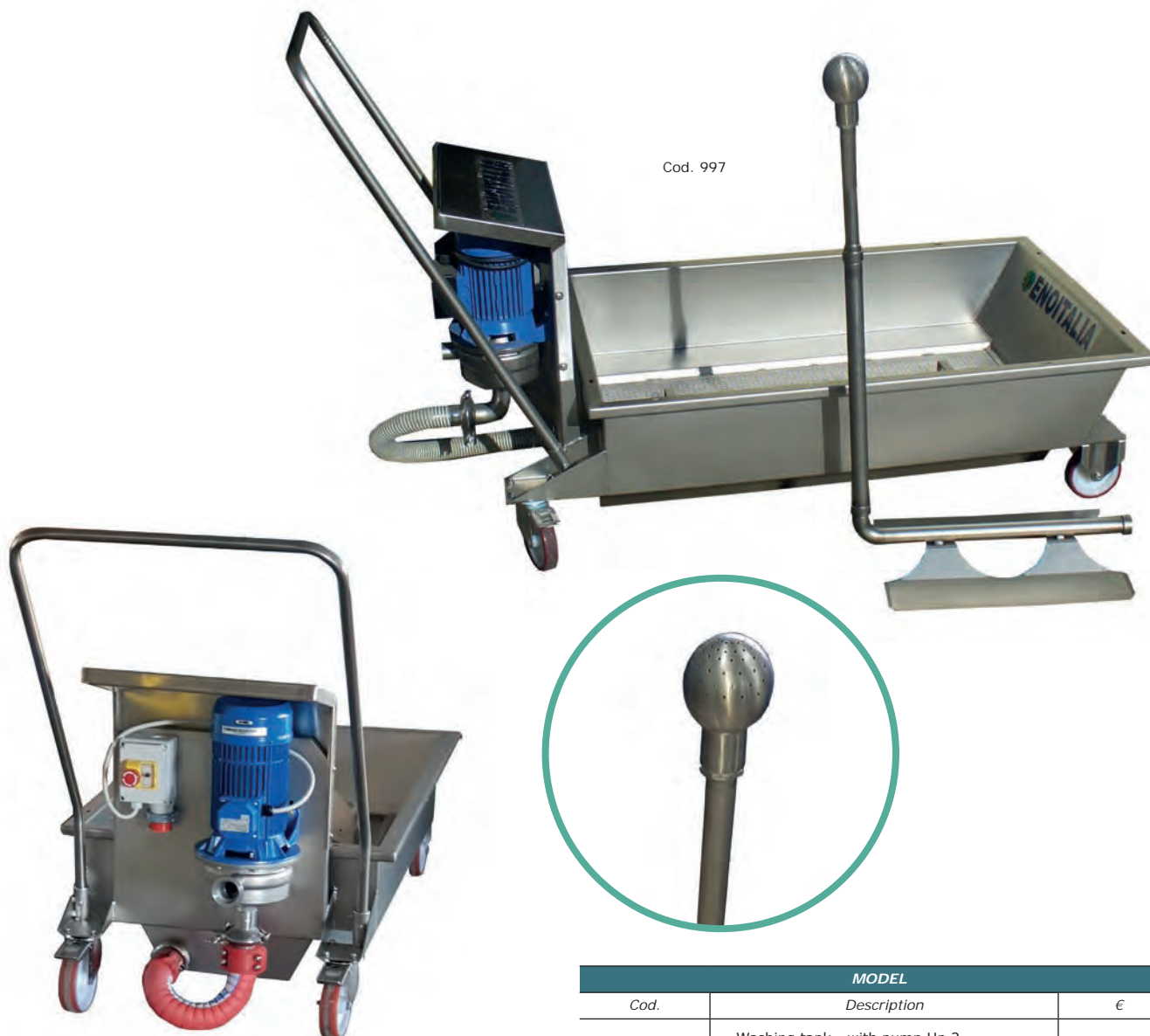
MODEL		
Cod.	Description	€
851	Svinatore SV2	
4275	Automatic svinatore with level marker panel control with plug to connect external pump single-phase (pump not included)	
4276	Automatic svinatore with level marker panel control with plug to connect external pump three-phase (PUMP non inclusa)	
4273	Automatic svinatore, with single-phase panel control, and integrated pump ENOS	

MODEL	FITTING	DIMENSION	CAPACITY
SV2	50 garolla	600x700x390 mm	130 lt



# AUTOMATIC WASHING TANK

Cod. 997



## STANDARD FEATURES

- Frame in stainless steel AISI 304
- Centrifuge pump in stainless steel
- Extractable filter for cleaning
- Connection for total drain
- 4 wheels with brake
- Panel control with emergency stop and termic protection
- Washing head in stainless steel, connection garolla 40 (OPTIONAL)

## MODEL

Cod.	Description	€
996	Washing tank - with pump Hp 2 single-phase	
997	Washing tank - with pump Hp 4 three-phase	

## OPTIONAL

Cod.	Description	€
993	Stainless steel washing slide complete with anti-scratch profiles and 700mm extension. Terminal sphere d.90	

MODEL	ENGINE HP (Kw)	FITTING	HOPPER DIMENSION	CAPACITY	MAXIMUM HEIGHT TANK'S CYLINDER
996	2 (1,5)	40 garolla	760x1100x370 mm	220 lt	3 mt
997	4 (3)	40 garolla	760x1100x370 mm	220 lt	6 mt



# MOTORIZED MIXER



Video



Cod. 870



Cod. 872 + 874



Cod. 872



Cod. 876

## STANDARD FEATURES

- Electric motor three-phase, 1,1 Kw/0,8 Kw
- Panel control with emergency stop 24V circuit and transformer (except MIX 90)
- Mechanical seal Grafite/NBR max 12 BAR
- Removable stainless steel shaft length 65 cm.
- Folding helix, automatic opening width 15 cm.
- Inox valve for dosing
- Connection fitting to be indicate at the minimum way 36mm diameter

## MODEL

Cod.	Description	€
<b>870</b>	Motorized mixer MIX100	
<b>872</b>	Motorized mixer MIX100 with electronic speed variator Single-phase	
<b>873</b>	Motorized mixer MIX100 with electronic speed variator Three-phase	

## OPTIONAL

Cod.	Description	€
<b>876</b>	Inox support with manual regulation (Height center valve 30-140 cm)	
<b>874</b>	Dosing pump EURO 20, HP 1,5 installed on bord with special fitting	
<b>879</b>	Tool to install the mixer on incline valve (only with option 876)	
<b>7023</b>	Mechanical seal	

MODEL	ENGINE HP (Kw)	POWER	SPEED	TANK max. CAPACITY	DIMENSION	WEIGHT
<b>870</b>	1,5 (1,1)	Three-phase	1400 RPM	300 hl	230x250x960 mm	20 Kg





# CARTON FILTER VIRGILIO e MINI VIRGILIO



Mod. VIRGILIO



Mod. MINI VIRGILIO

## STANDARD FEATURES

### FILTER MINIVIRGILIO

- Frame in stainless steel AISI 304
- Plate in stainless steel and PPA dimension 20\*20mm
- Pump centrifuge type ENOS 20 in stainless steel, 1,9 bar pressure
- Manometer

### FILTER VIRGILIO

- Trolley in stainless steel AISI 304
- Filter plate in stainless steel and PPA, dimension 20x20
- Sample tap in stainless steel
- Stainless steel manometer

MODEL		
Cod.	Description	€
901	Filter MINI VIRGILIO 6 plate (PUMP included)	
902	Filter MINI VIRGILIO 10 plate (PUMP included)	
903	Filter VIRGILIO 10 plate	
904	Filter VIRGILIO 20 plate	
905	Filter VIRGILIO 30 plate	
906	Filter VIRGILIO 40 plate	

## OPTIONAL (per filtro VIRGILIO)

Cod.	Description	€
9202	Centrifuge pump inox ENOS 20, 1,9 bar pressure	
9313	Volumetric pump EURO 20 with rubber impeller, 3,2 bar pressure	
907	Reversing plate in stainless steel (for models 905 e 906)	

MODEL	PLATE NUMBER	CARTON DIMENSION	FILTERING SURFACE M2	WINE CAPACITY L/H	OIL CAPACITY L/H	DIMENSION MM/KG
901	6	20x20 cm	0,24	80-200	80	600x330x440/13
902	10	20x20 cm	0,4	130-280	130	600x330x440/13
903	10	20x20 cm	0,4	130-280	130	600x500x750/32
904	20	20x20 cm	0,8	600-900	600	600x500x750/36
905	30	20x20 cm	1,2	900-1500	900	600x500x750/49
906	40	20x20 cm	1,6	1400-1800	1400	600x500x750/54

# CONDITIONS OF GUARANTEE

The guarantee covers the machinery for the first twelve months from its activation. Should the machine not be used immediately insurance coverage is guaranteed for up to eighteen months from the date of delivery and expires thereafter. The guarantee does not cover machine transportation for which the buyer is responsible. The goods travel at the risk of the customer even if sold carriage paid. The guarantee is not applicable in case the machine is not used in accordance with the instructions contained in the manual. The repair work is understood as being ex our factory in Cerreto Guidi,(FI); transportation is at the buyer's expense.

The guarantee does not cover any defects due to the following reasons and entailing the termination of all our obligations:

- Incorrect installation.
- Tampering with the machine.
- Lack of experience, failure to carry out maintenance operations, failure to promptly notify us of any defects.
- Failure to follow the instructions contained in the manual.
- Repair work carried out by personnel not authorized by Enoitalia s.r.l.
- Transportation damage that cannot be attributed to manufacturing or packaging defects.
- Machine installation and electrical connections carried out in ways other than those indicated in the manual and to the plate located on the engine.
- Transportation expenses and risks in case the machinery is sent to authorized assistance centres.
- Electrical components.
- Consumables and ordinary maintenance costs contained in the above-mentioned manual.

The guarantee does not extend to the obligation of covering damages to individuals or things deriving from the use of our product also when broken or defective. We decline our obligations in case the payment conditions agreed are not respected.

Any complaint should be made in writing by the buyer to ENOITALIA s.r.l. within 8 days from the date of purchase.

**Conditional sale:** Pursuant to articles 1523-1524 of the code of civil practice, the property of the goods sold is transferred to the buyer only once the goods have been paid in full as agreed.

Any controversy shall be referred to the place of jurisdiction of Florence.

Any controversy is disciplined by the Italian law even if goods are acquired by a foreign Italian citizen or if goods are supplied to a company abroad.

# ENOITALIA and *ENOITALIA* Group

The current ENOITALIA company was originally founded in the 1960's under the name OFFICINA ARNO. At the time, the workshop focused on building mechanical machines intended for receiving harvest wagons in which the grapes were processed with traditional destemmers and presses.

Over the years, the "Officine Arno" company, attentive to technologies and innovative with respect to the changing needs of the wine market, perfected, with innovations and patents, its production. This has led to an expansion in the selection of machines offered, characterised by specific and diverse functions. In addition to its ingenuity, the company designed and created pumps, filling machines and transport systems, which helped transform the artisanal vision of the workshop into an industrial company characterised by ongoing development.

In 1988, Officine Arno was officially transformed into ENOITALIA srl, with numerous patented products to its name (grape harvesting wagons, centrifugal pumps, stemmer-crushers, the Extravelvet system), which found great success and have been widely used in the wine market.

The professionalism and expertise acquired over the years, in addition to the application of innovative equipment and technologies, today allow ENOITALIA srl to carry out every phase of production, offering exclusive Italian machinery and manufacturing products, with a quality recognised in every market sector.

ENOITALIA srl is active in over 35 countries, with an extensive and efficient sales network, focused on ensuring consistent service and quality, exclusively Made in Italy.

In 2007 the founding members of ENOITALIA srl participated in the creation of a new company, ENOTOSCANA srl, specialized in the construction of stainless steel tanks. From the collaboration between the two companies, in 2018 a new division dedicated to the beer sector was born: ENOBEER srl.

Professionalism, expertise, service and competitiveness: these are the strengths of the ENOITALIA Group, elements that continue to ensure the growth of the company and the appreciation of its customers.









**ENOITALIA**

ENOLOGICAL EQUIPMENTS

Via Provinciale Pisana 162 - 50050 CERRETO GUIDI (FI) - ITALY

tel. +39 0571 588031 - fax +39 0571 588080

[www.enoitalia.net](http://www.enoitalia.net) - [info@enoitalia.net](mailto:info@enoitalia.net)